



SMART
DESIGN
EXTENSIVE



DISCOVER **SMART DESIGN** STYLE

exhibition

we design and build
trade fair exhibition stands around the world

Our customers appreciate:

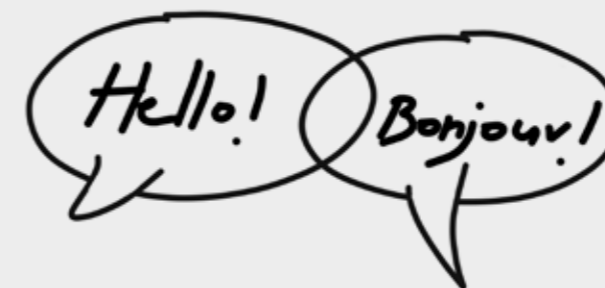


The procurement department supplies all kinds of **materials**

All people in the technical department are **architects with many years of experience** in preparing stands for production



We have over **20 years of experience** market



Our project managers are fluent in **english, german, ukrainian** and **french**



We have our own **machine park** and **carpentry shop**. Our team is over 150 experienced carpenters, fitters, electricians and warehouse workers

Projects that we implement are **always done on time!**



**They are responsible for
success of the entire project.
Heart and soul of
Smart Design Expo**

CO-OWNERS

Łukasz Jerzmanowski

Passionate about music and good sound. Founder of a promising rock band. Once the greatest Polish hope of the FIFA World Cup, but we feel that it will still be talked about. Who knows, maybe it will finally breathe some emotions into the Polish league? In between these activities, he decided that photography was something he was into, so he became a photographer and the vision and concept of SDE. He has 20 years of experience in the exhibition industry.



Darek Kaczmarek

Cross country running, road running, track running, trail running – you name it and he has tried it. He is always determined to get to the finish line and willing to take part in tough races, also those against the time. He is not afraid of challenges – there have already been so many that it is hard to keep track of them. His bold steps can also be admired on the dance floor – he is an amazing dancer who will dance the night away at office parties. He would make a great singer as well. Thanks to him, our crews are always on time or even ahead of time. He has been working in the trade exhibition industry for over 20 years.



Michał Ogrzewalski

A true master of calmness and composure – if you think you can knock him out of his rhythm, you're wrong! He never loses his head. This is one of his best assets. Let's add to this a unique sense of humor and the ability to relieve tension. He has 20 years of experience in the exhibition industry.



Get to know our projects

Anwis / R + T	_6
Wiśniowski / BAU	_9
Drutex / BAU	_13
BP2 / BAU	_15
Marmite / KBIS	_18
Drutex / IBS	_21
Dako / IBS	_23
SDE / Euroshop	_26
BP2 / Budma	_29
Radaway / ISH	_32
Ceramika Końskie / Cersaie	_35
Ciarko / Warsaw Home	_37
Drutex / Frontale	_40
Polregio / Trako	_43
Rejs / Warsaw Home	_48
SDE / Euroshop	_53
Radaway / 4 Design Days	_55
Omnires / Warsaw Home	_59
Marmite / KBIS	_62
Aluprof / BAU	_65
Atlas / BAU	_68
Dekoma / Heimtextil	_71
Balma / Warsaw Home	_74
Drutex / Frontale	_76
VOX / PSB	_79
Idea of Swedwn / IFA	_81
Solaris / Busworld	_84
Oka / Orgatec	_87
PKP / Trako	_89

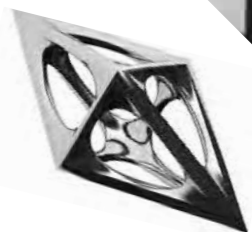
ANWIS
R+T, 160 SQM
STUTT GART, 2018

DESIGN AND CONSTRUCTION
SMART DESIGN EXPO

BONUS: STAND FEATURED
IN TRADE FAIR DESIGN ANNUAL 2018/19

AWARD

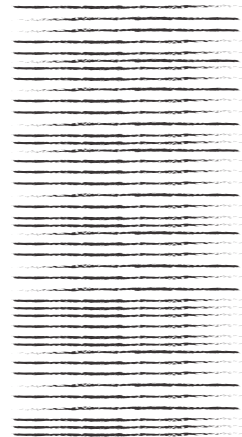
A'DESIGN AWARD 2019
ANWIS — SILVER AWARD IN THE CATEGORY
INTERIOR SPACE AND EXHIBITION DESIGN



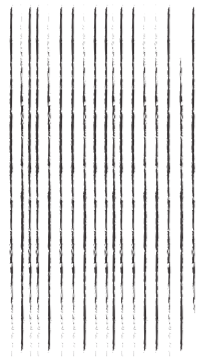
Modern house allegory



blinds-
Anvis product



the line
becomes an
inspiration



arranged
vertically



on the facade
of the stand





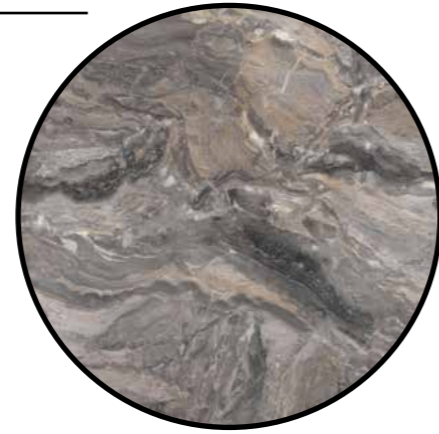
The façade of the stand is made of 1,150 concrete strips of plywood of various

**WIŚNIOWSKI
BAU, 572 SQM
MUNICH, 2023**

DESIGN AND CONSTRUCTION:
SMART DESIGN EXPO



Smart inspiration



marble finishes

+



concrete slab

+

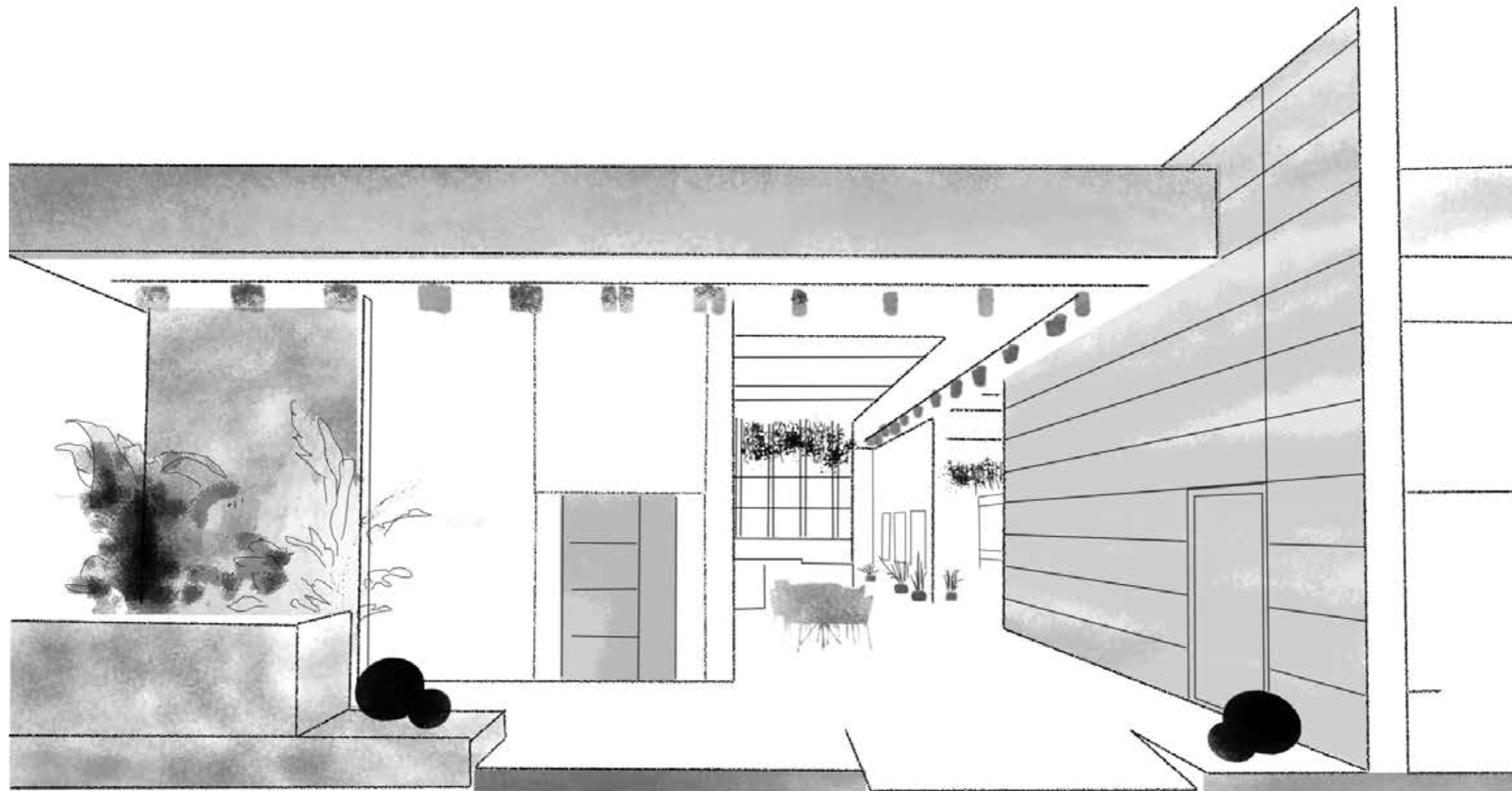


illuminated installation with

+



cascading vegetation





The leitmotif of the stand is a rich, elegant villa with a garden and a pergola.

**DRUTEX
BAU, 280 SQM
MUNICH, 2023**

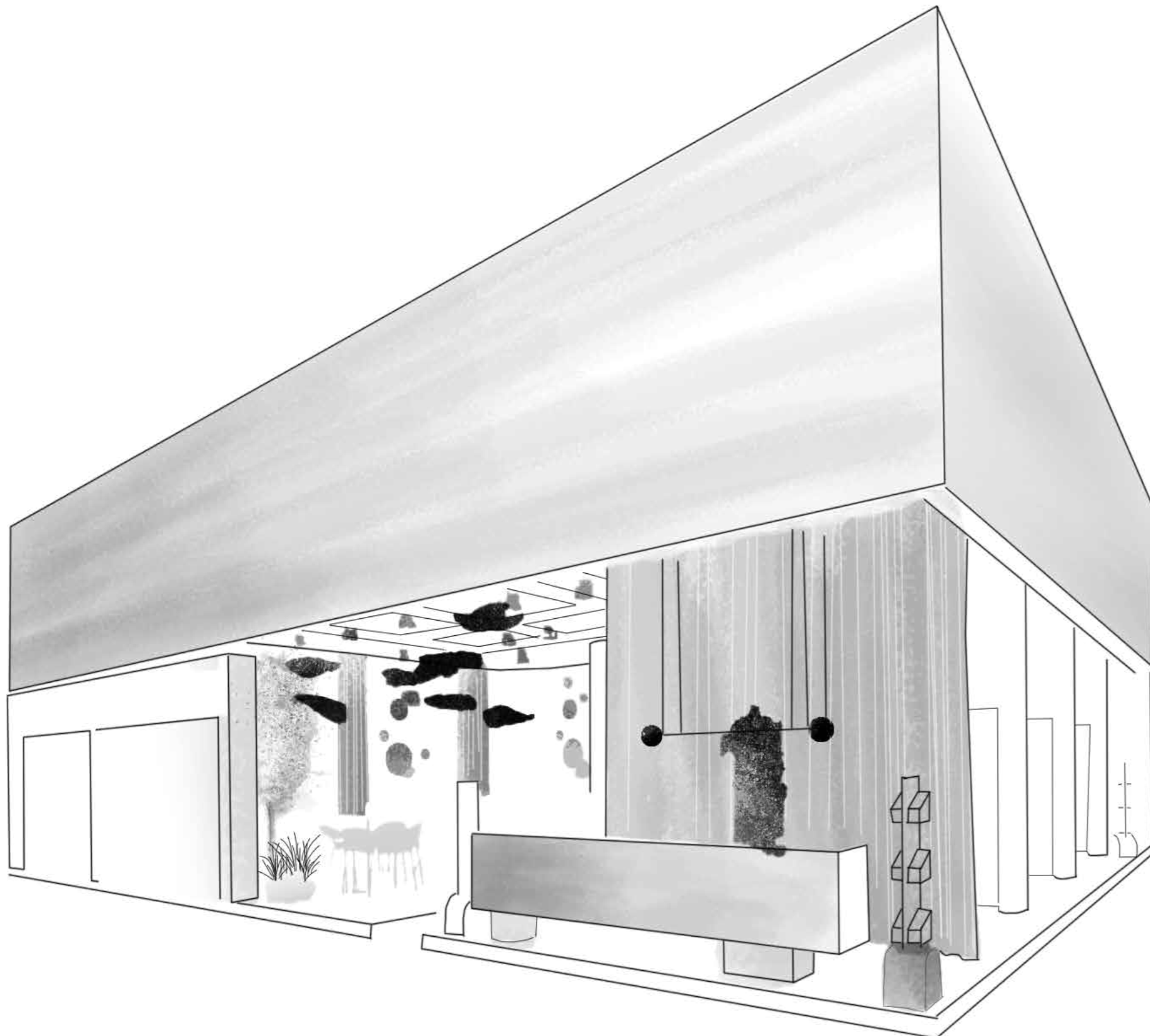
DESIGN AND CONSTRUCTION:
SMART DESIGN EXPO

DRUTEX
ENGINEERED FOR YOU

DRUTEX
ENGINEERED FOR YOU



Smart inspiration

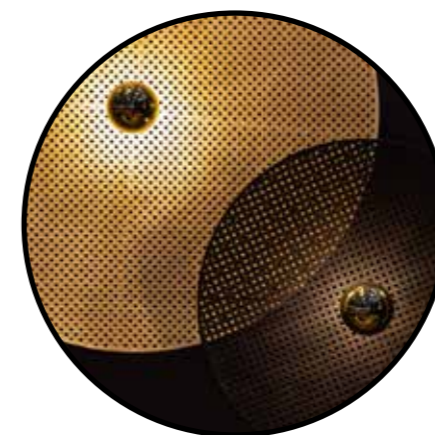


vibia palm lamp

+

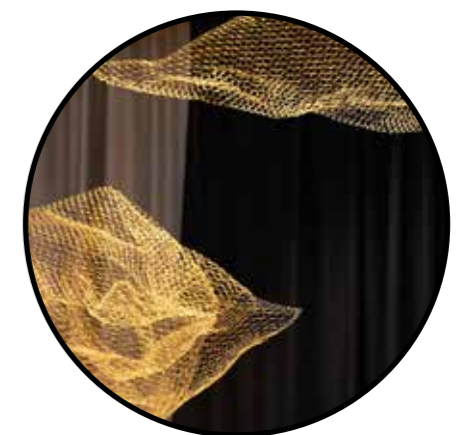


negra plum



tan tan aroma lamps

+



golden clouds



The Drutex stand combines a business interior with a captivating set design reflecting the atmosphere of the golden hour.

BP2
BAU, 255 SQM
MUNICH, 2023

DESIGN AND CONSTRUCTION:
SMART DESIGN EXPO



Smart inspiration



led lighting
+
industrial construction

+



tables made of
barrels

+

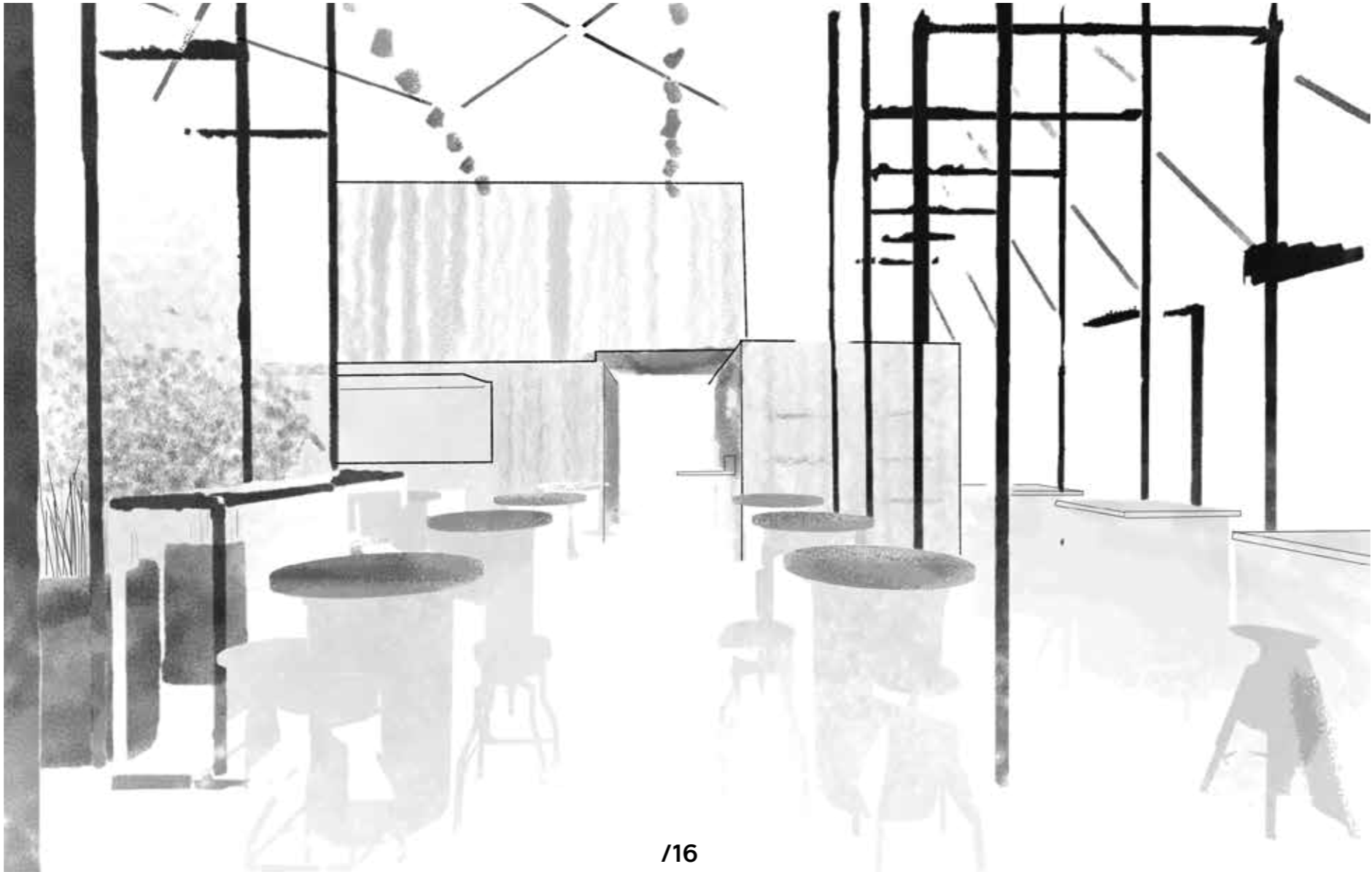


plants

+



containers





The industrial-style BP2 stand was built entirely from renewable elements.

**MARMITE
KBIS, 232 SQM
LAS VEGAS, 2023**

DESIGN AND CONSTRUCTION:
SMART DESIGN EXPO



Smart inspiration



+



+



+

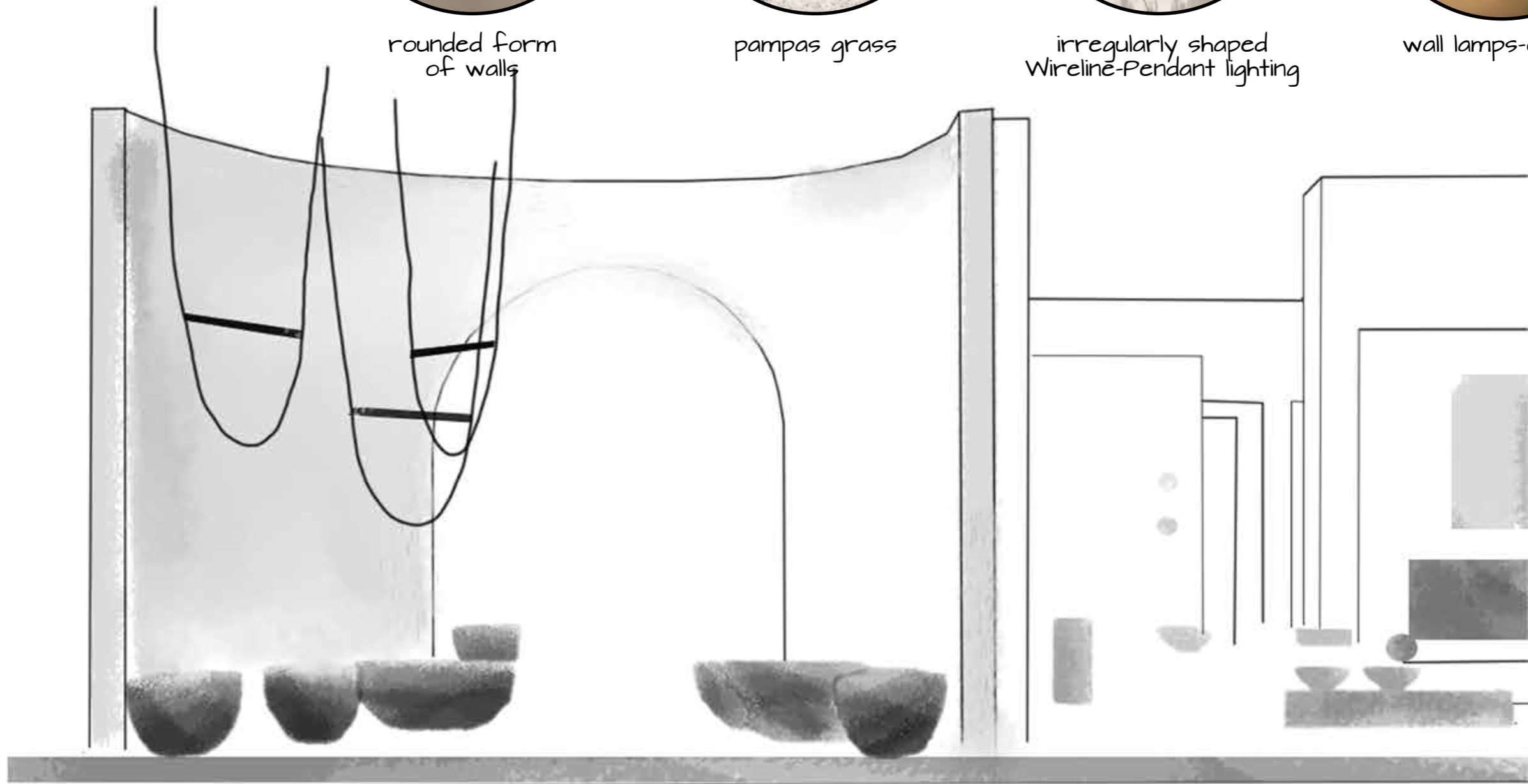


rounded form
of walls

pampas grass

irregularly shaped
Wireline-Pendant lighting

wall lamps-optima





The whole is complemented by atmospheric lighting and accessories in the form of boho pampas grasses.

DRUTEX
IBS, 226 SQM
LAS VEGAS, 2023

DESIGN AND CONSTRUCTION:
SMART DESIGN EXPO

DRUTEX
ENGINEERED FOR YOU

since 1985

WINDOWS DOORS SHUTTERS

DRUTEX
ENGINEERED FOR YOU



An inseparable detail of Drutex stands are subtle, golden clouds made of metal mesh.

DAKO
IBS, 148 SQM
LAS VEGAS, 2023

DESIGN AND CONSTRUCTION:
SMART DESIGN EXPO

ENTER DAKO WORLD - EXPERIENCE THE EUROPEAN STYLE

DAKO

DAKO
DAKO
DAKO

ipg
interplay
group

Smart inspiration



yellow velor fabric

+

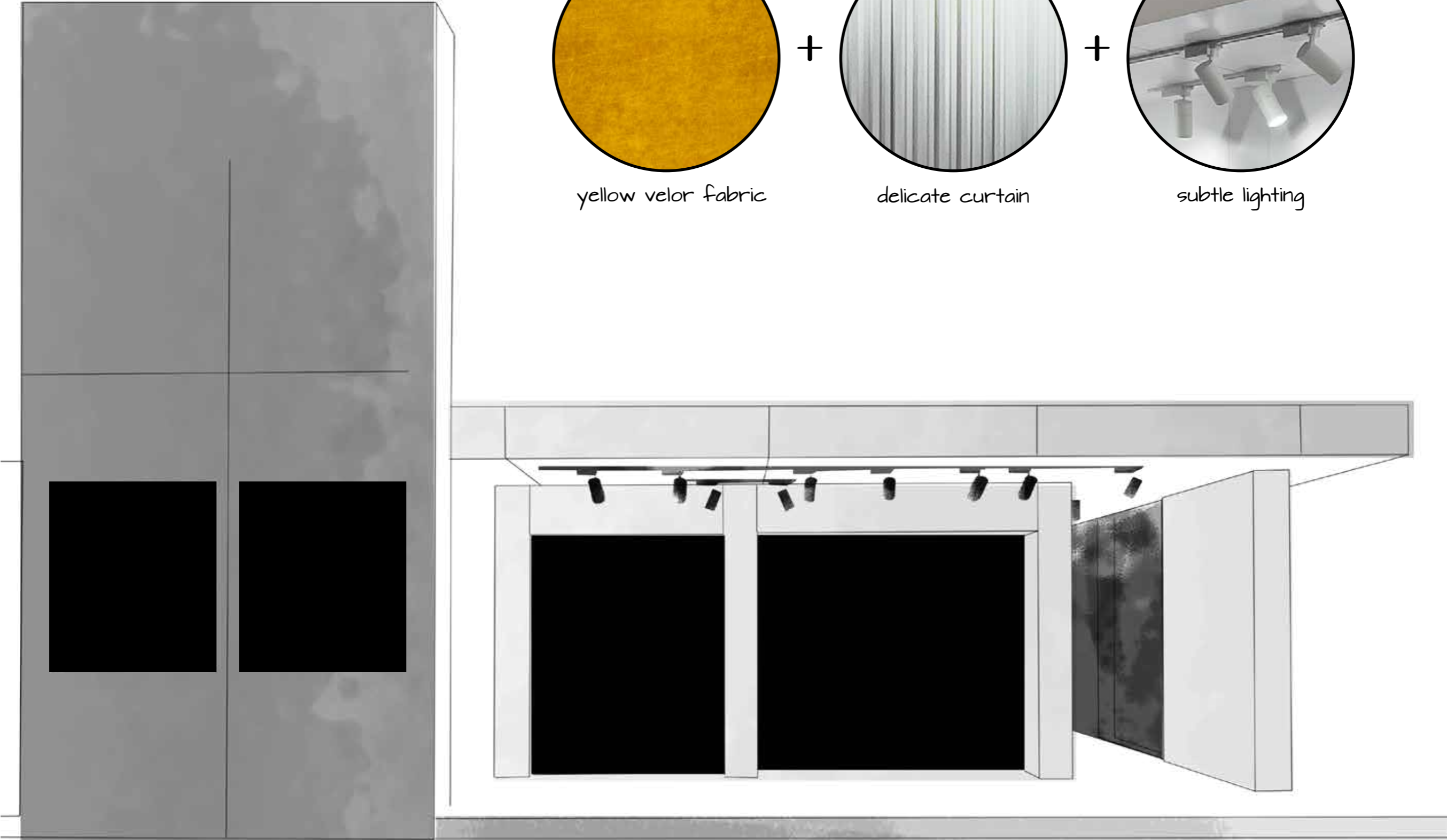


delicate curtain

+



subtle lighting





The glass wall creates the impression of openness and spaciousness, while dividing the stand into zones.



AWARD
EXHIBITOR SILVER
AWARDS 2023

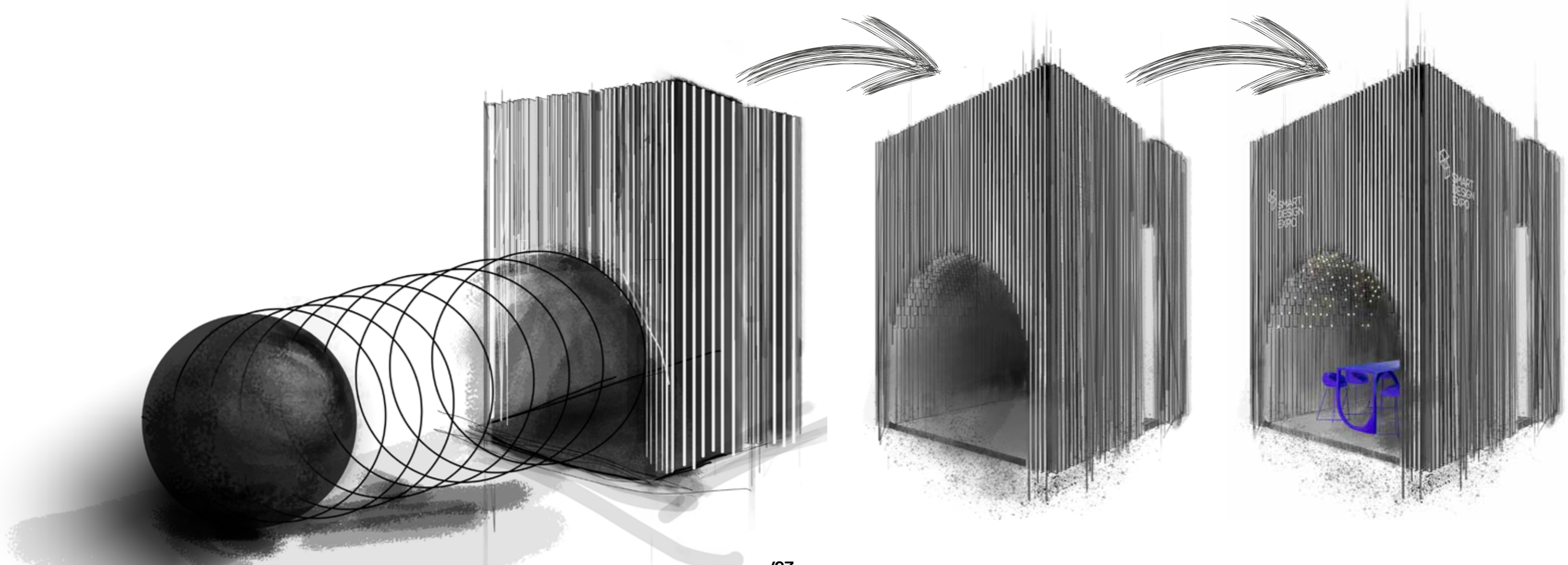
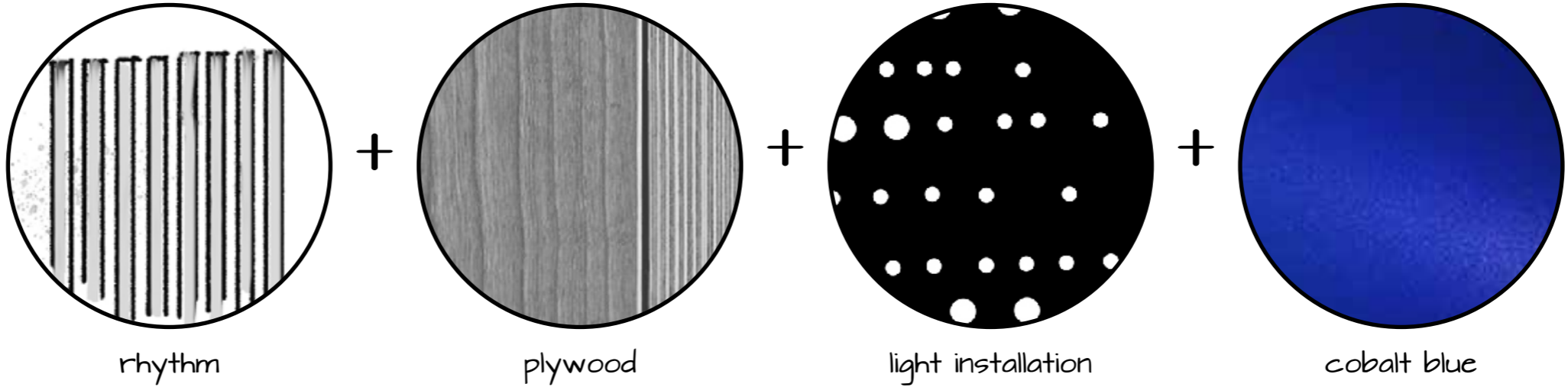


SMART DESIGN EXPO EUROSHOP, 23 SQM DUSSELDORF, 2023

DESIGN AND CONSTRUCTION:
SMART DESIGN EXPO

BONUS: SILVER PRIZE
EXHIBITOR SILVER AWARDS 2023

Smart inspiration





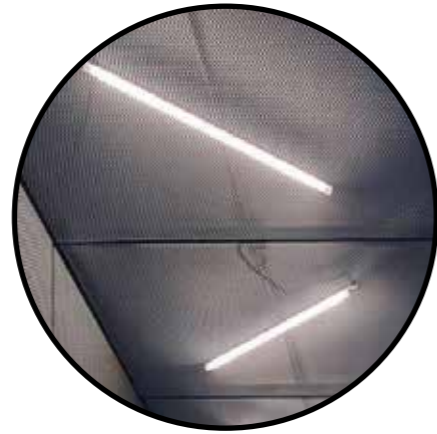
The wooden elements that make up the body of the stand create a regular, rhythmic structure.

BP2
BUDMA, 250 SQM
POZNAŃ, 2023

DESIGN AND CONSTRUCTION:
SMART DESIGN EXPO



Smart inspiration



led lighting

+



containers

+

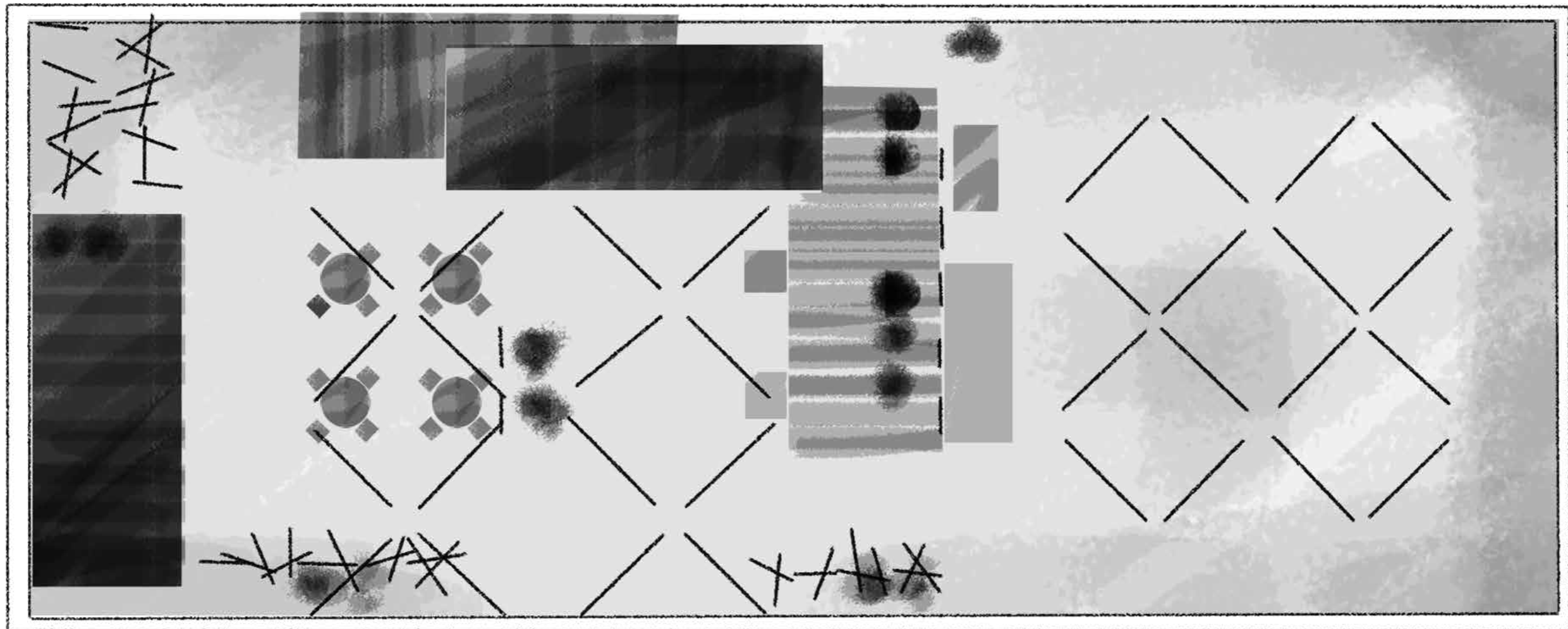


industrial construction

+



tables made of barrels





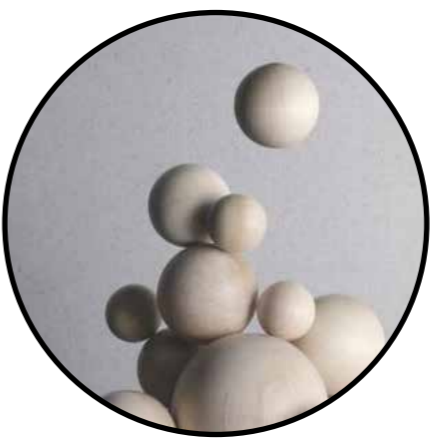
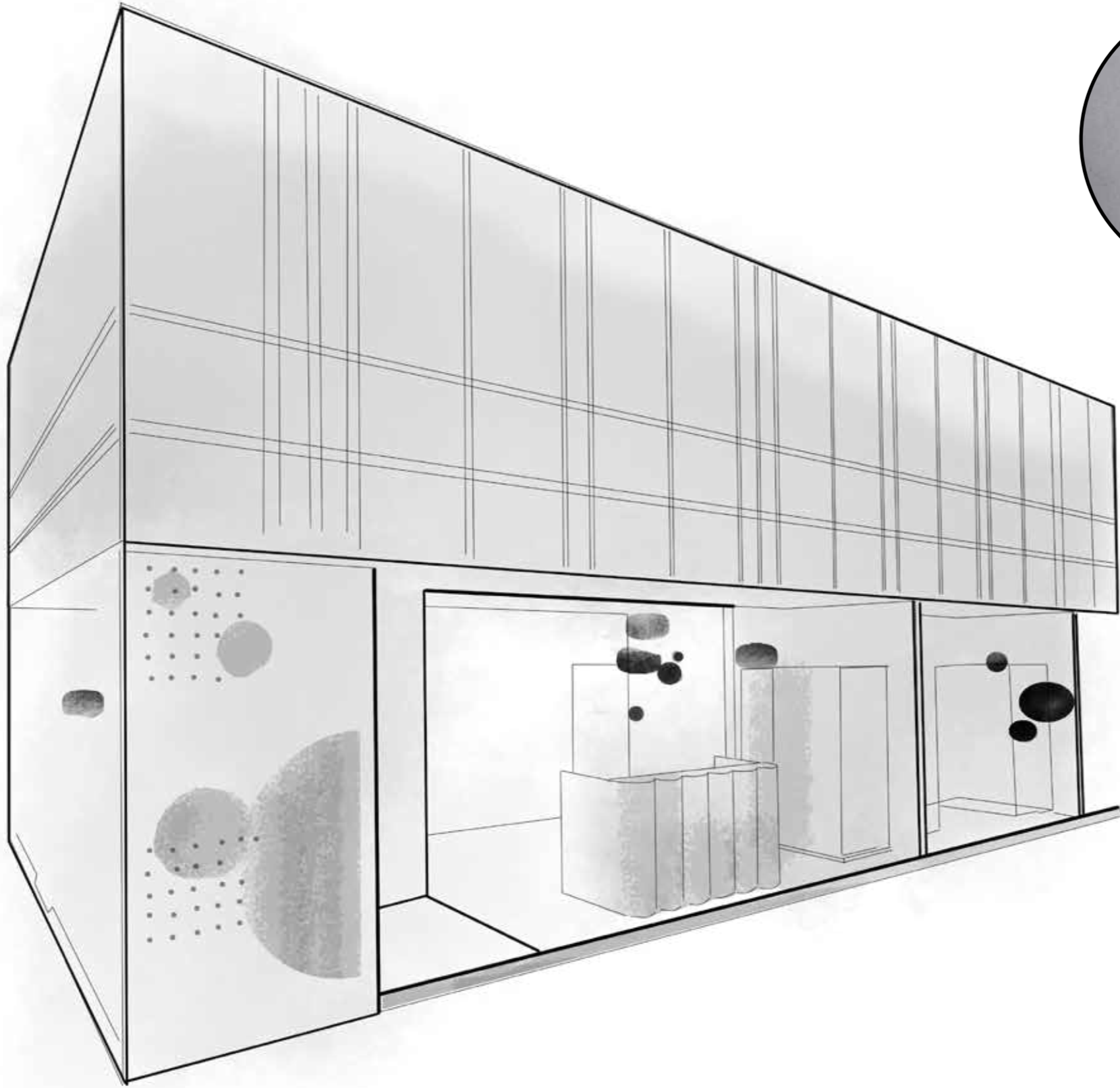
The industrial character is emphasized by neon lights, graphic patterns and a metal construction grid.

**RADAWAY
ISH, 71 SQM
FRANKFURT, 2023**

DESIGN AND CONSTRUCTION:
SMART DESIGN EXPO

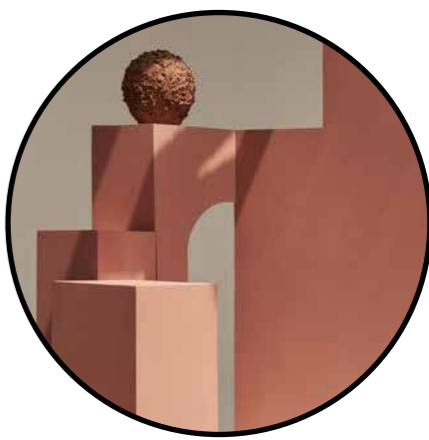


Smart inspiration

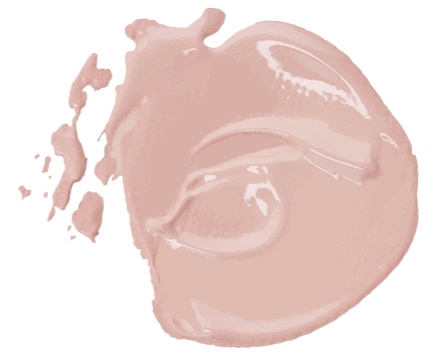


form

+



construction



color



The meeting zone contrasts blue-gray colors with the red-pink whole.

**CERAMIKA KOŃSKIE
CERSAIE, 255 SQM
BOLOGNA, 2022**

DESIGN:
SMART DESIGN EXPO x STARGRES

CONSTRUCTION: SMART DESIGN EXPO

**KON'SKIE
GROUP**



The Ceramika Końskie stand combines slats, openwork walls, semi-circular porticoes and colors that add the mood.

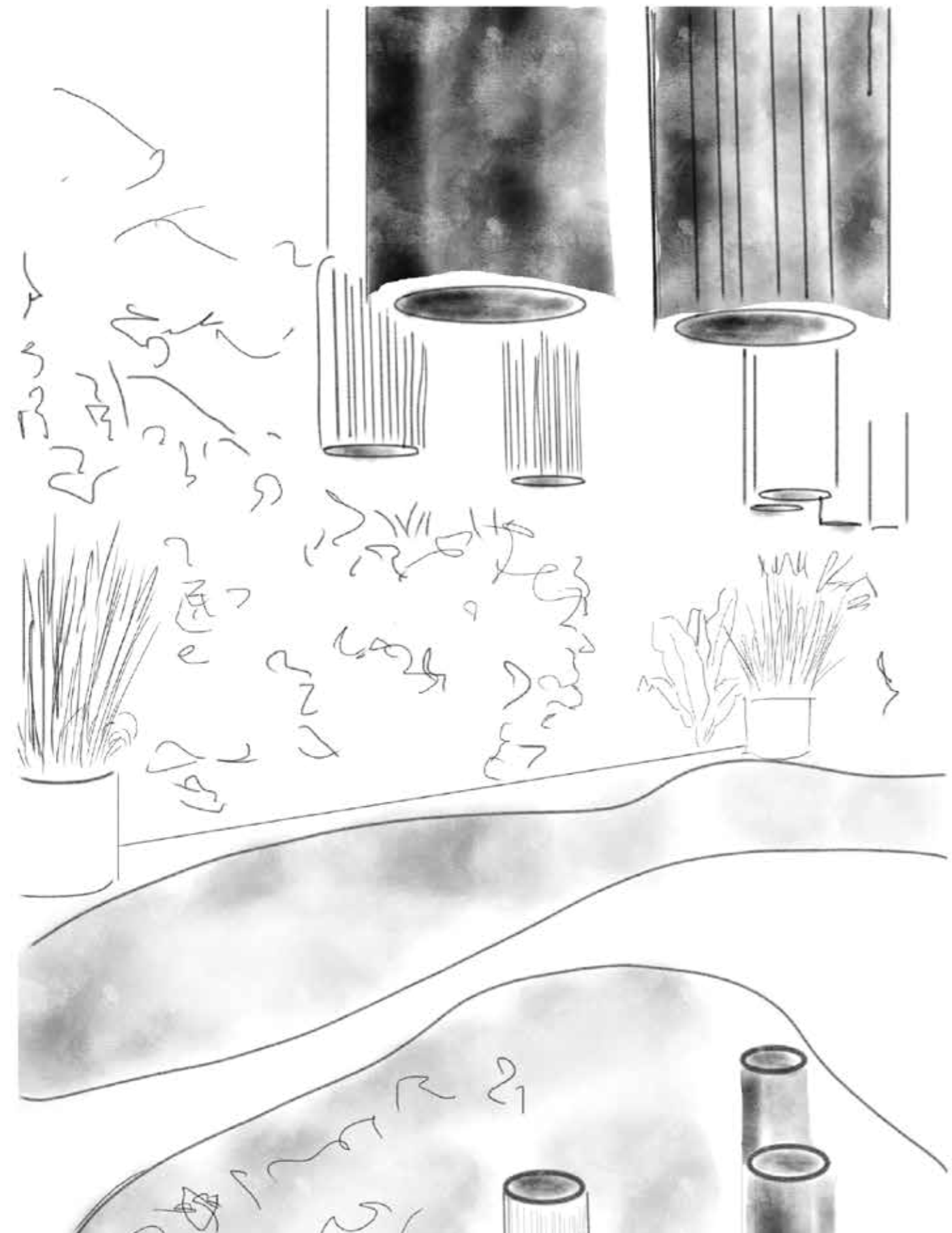
CIARKO DESIGN

CIARKO
WARSAW HOME, 104 SQM
WARSAW, 2022

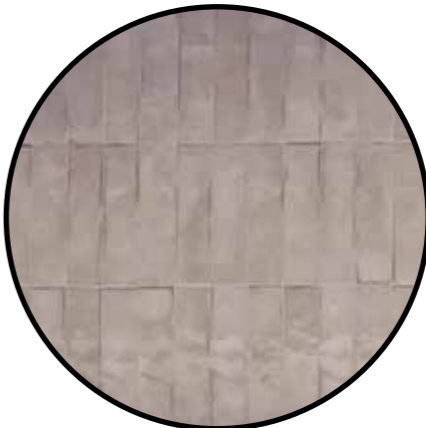
DESIGN AND CONSTRUCTION:
SMART DESIGN EXPO



Smart inspiration



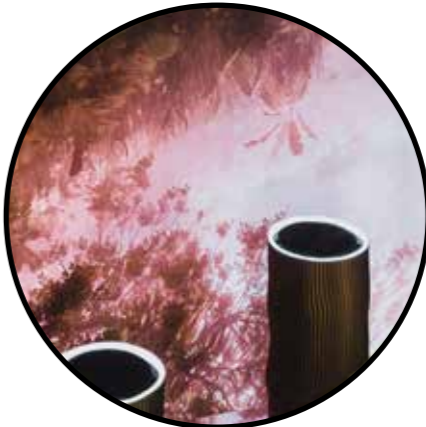
floral elements



finishing of the bar counter



decorative bubbles



reflection in the floor element



The inspiration for the creation of a light and sensual stand was Alice in Wonderland.

**DRUTEX
FRONTALE, 237 SQM
NUREMBERG, 2022**

DESIGN AND CONSTRUCTION:
SMART DESIGN EXPO

BONUS: GOLD AWARD A-DESIGN
AWARD&COMPETITION 2023

AWARD

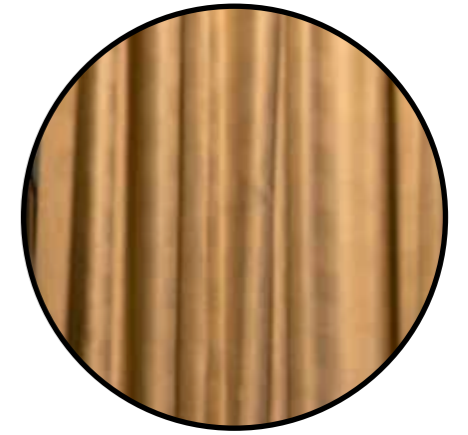
ELEGANCE AND MODERNITY
EXHIBITION STAND PRESS KIT
A-DESIGN AWARD & COMPETITION 2023



Smart inspiration

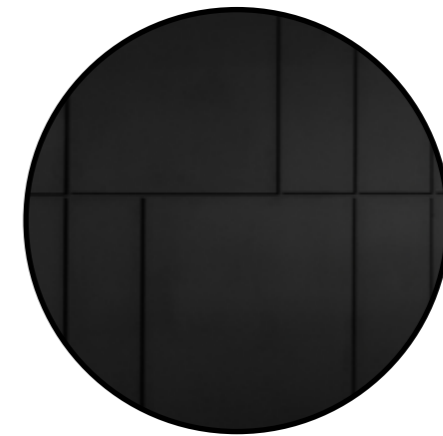


golden clouds



curtains

+



front panel



**Elegance and modernity.
The rawness of black and
concrete combined with the
energy and freshness
of plant elements.**

**CIARKO
WARSAW HOME, 56 SQM
WARSAW, 2021**

DESIGN AND CONSTRUCTION:
SMART DESIGN EXPO

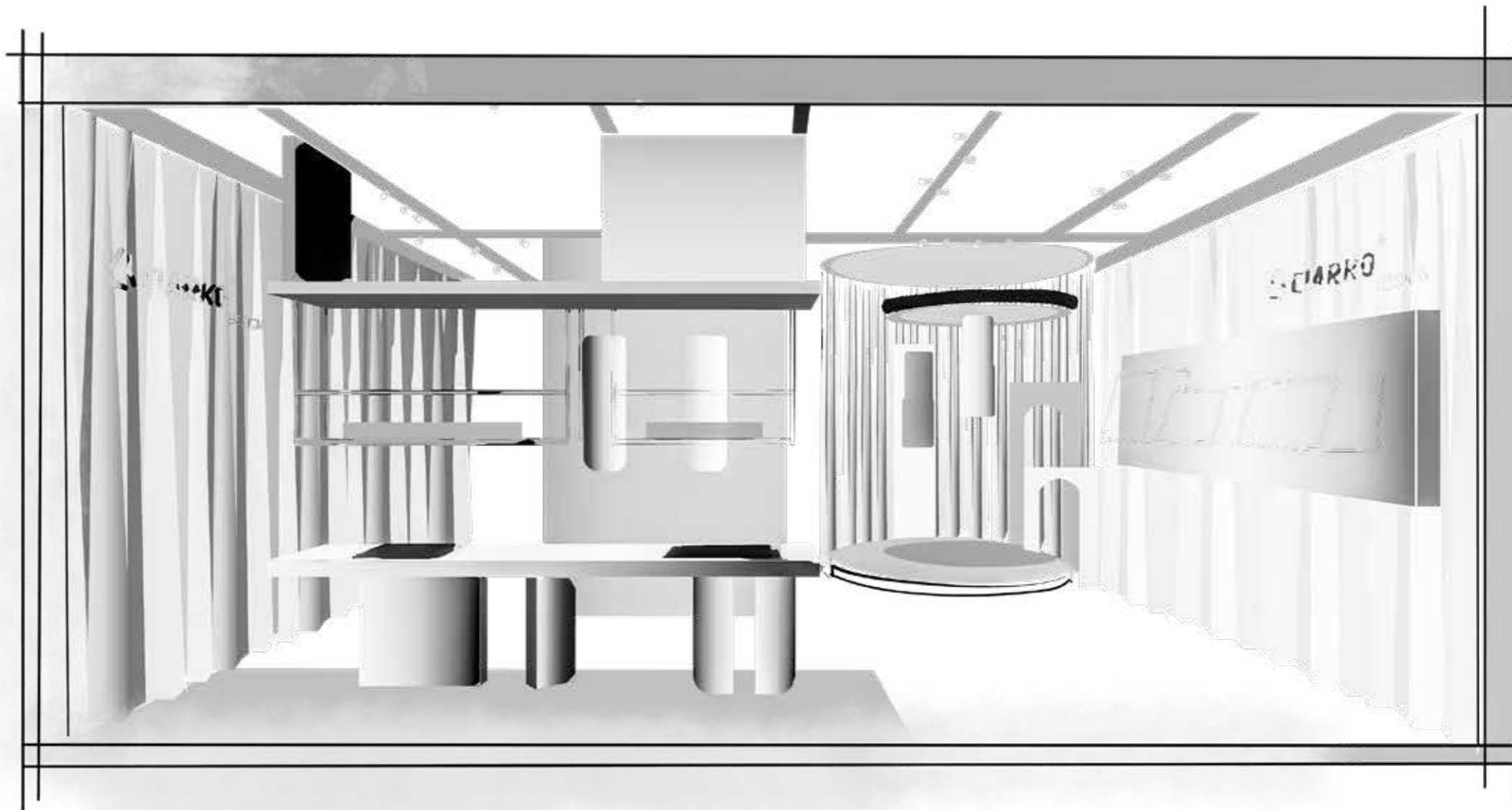
BONUS: STAND FEATURED
IN TRADE FAIR DESIGN ANNUAL 2022/2023



PUBLICATION

PUBLICATION IN TRADE FAIR
DESIGN ANNUAL 2022/23

Smart inspiration





The design is diverse in terms of structures – raw concrete on the kitchen island, velvet fabrics or a wall milled in lines are a pleasant background for products.

**POLREGIO
TRAKO, 368 SQM
GDAŃSK, 2021**

DESIGN AND CONSTRUCTION:
SMART DESIGN EXPO





The dark structures are complemented by the depth of green vegetation and the warm shade of wood.

REJS
WARSAW HOME, 104 SQM
WARSAW, 2021

DESIGN AND CONSTRUCTION:
SMART DESIGN EXPO

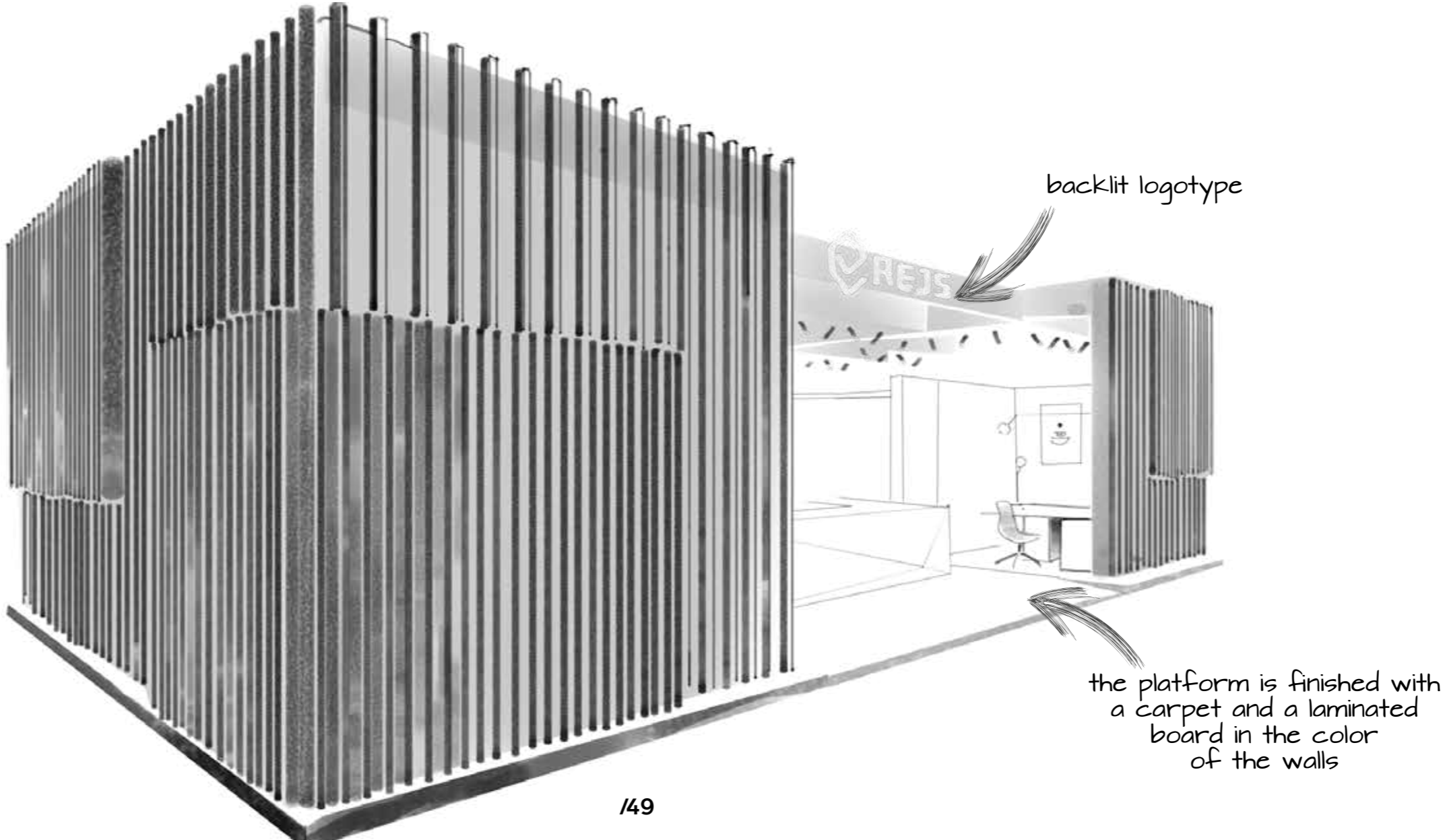
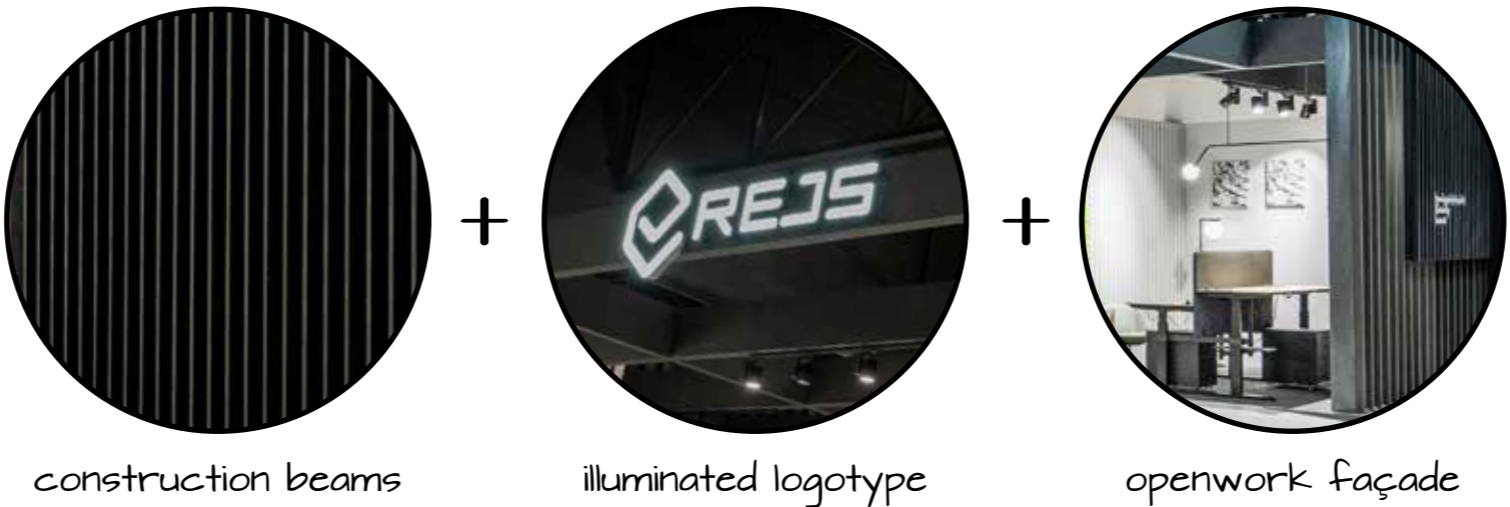


STALMOT

Największy producent
akcesoriów meblowych
w Europie

REJS

Smart inspiration



**DRUTEX
BUDMA, 300 SQM
POZNAŃ, 2020**

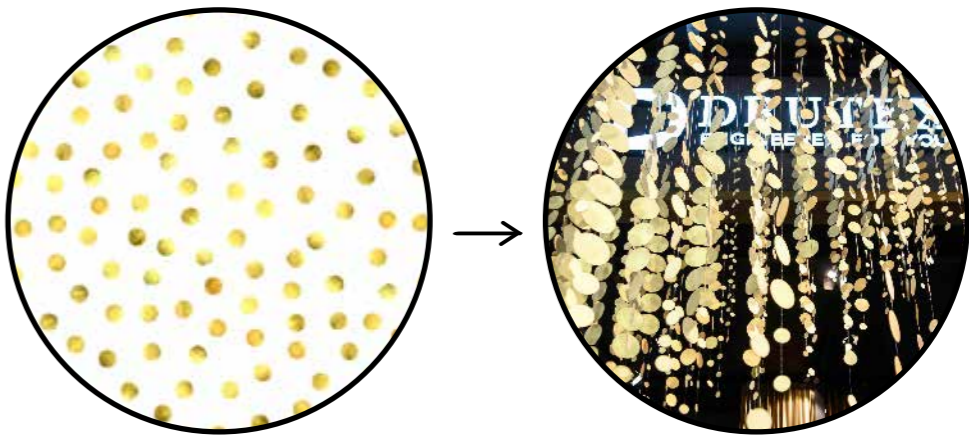
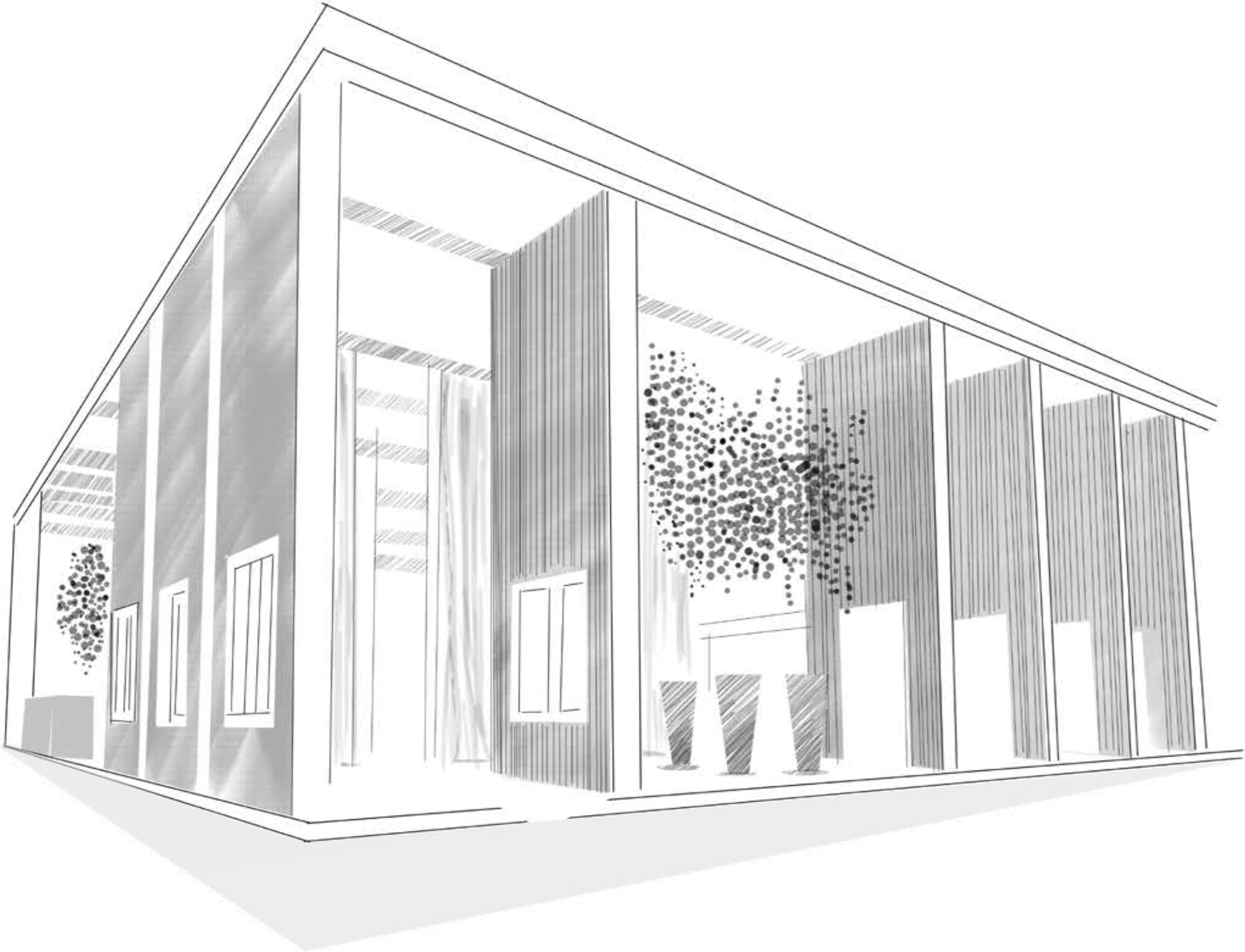
DESIGN AND CONSTRUCTION:
SMART DESIGN EXPO



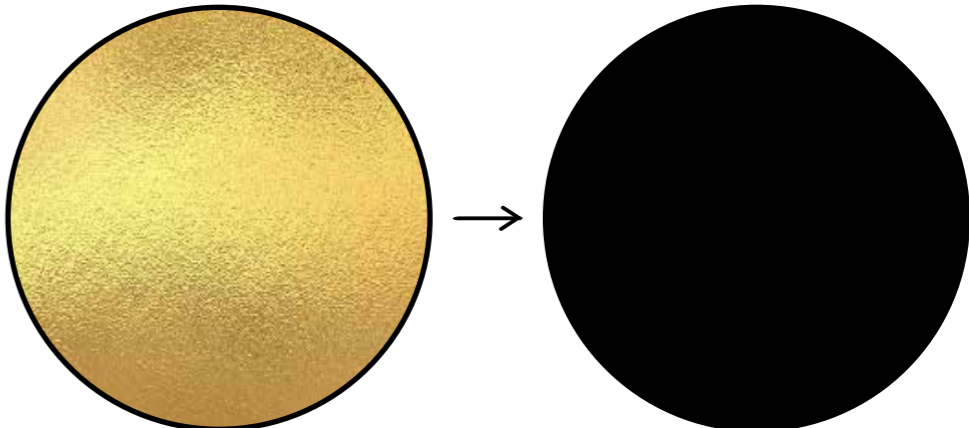
64

DRUTEX
5

Smart inspiration



confetti inspiration



gold and black color



We kept the colors consisting of black, gray and iridescent gold. Especially for the anniversary, we have prepared an inspiring installation - golden clouds that brought to mind confetti.

SMART DESIGN EXPO EUROSHOP, 34 SQM DUSSELDORF, 2020

DESIGN AND CONSTRUCTION:
SMART DESIGN EXPO

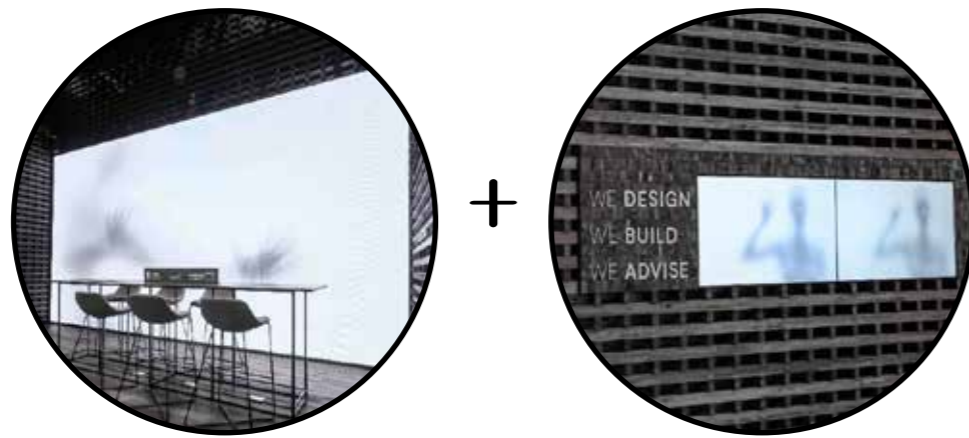
BONUS: SILVER AWARD EXHIBITOR
SILVER AWARDS 2020



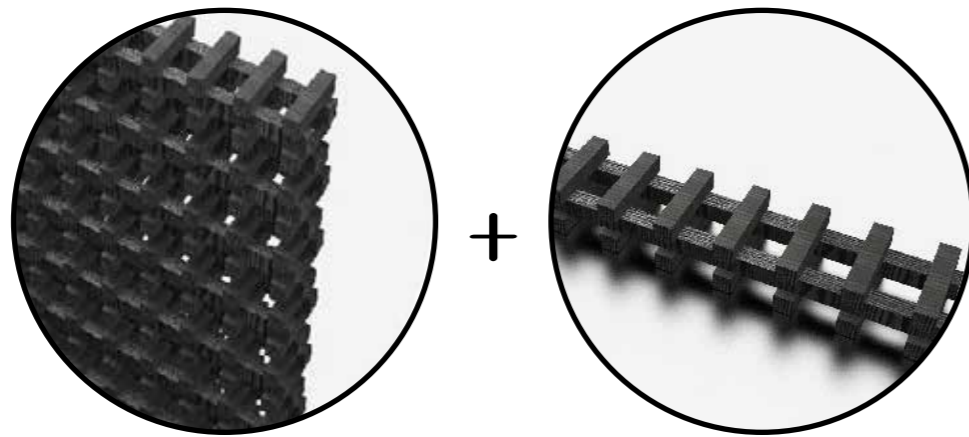
AWARD

EXHIBITOR SILVER
AWARDS 2020

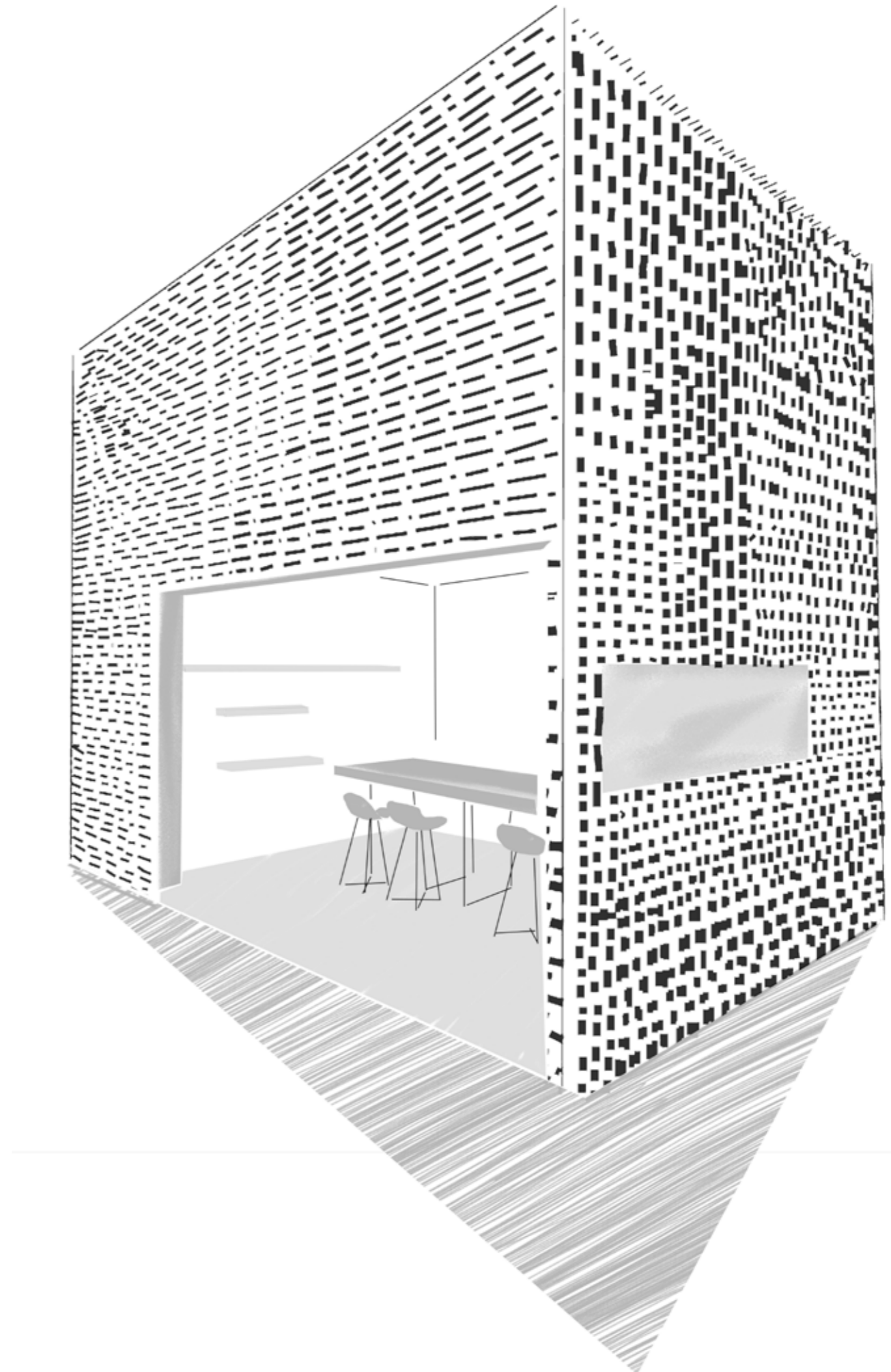
Smart inspiration



new technology



modularity
black wood





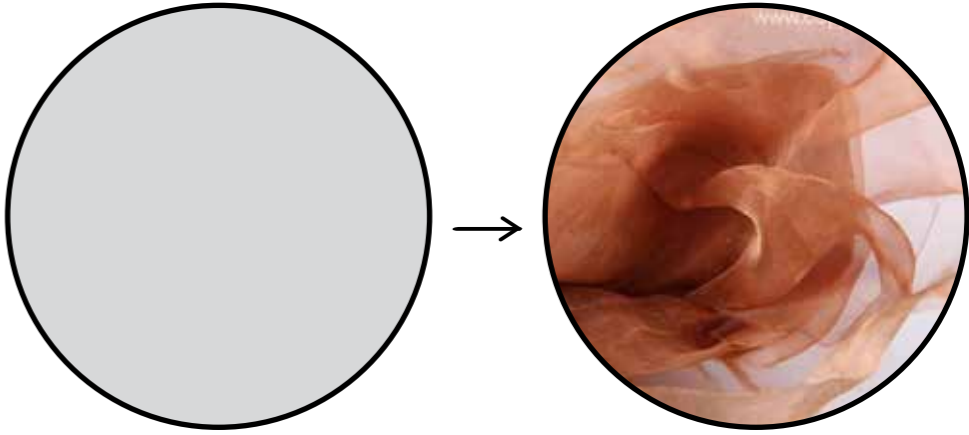
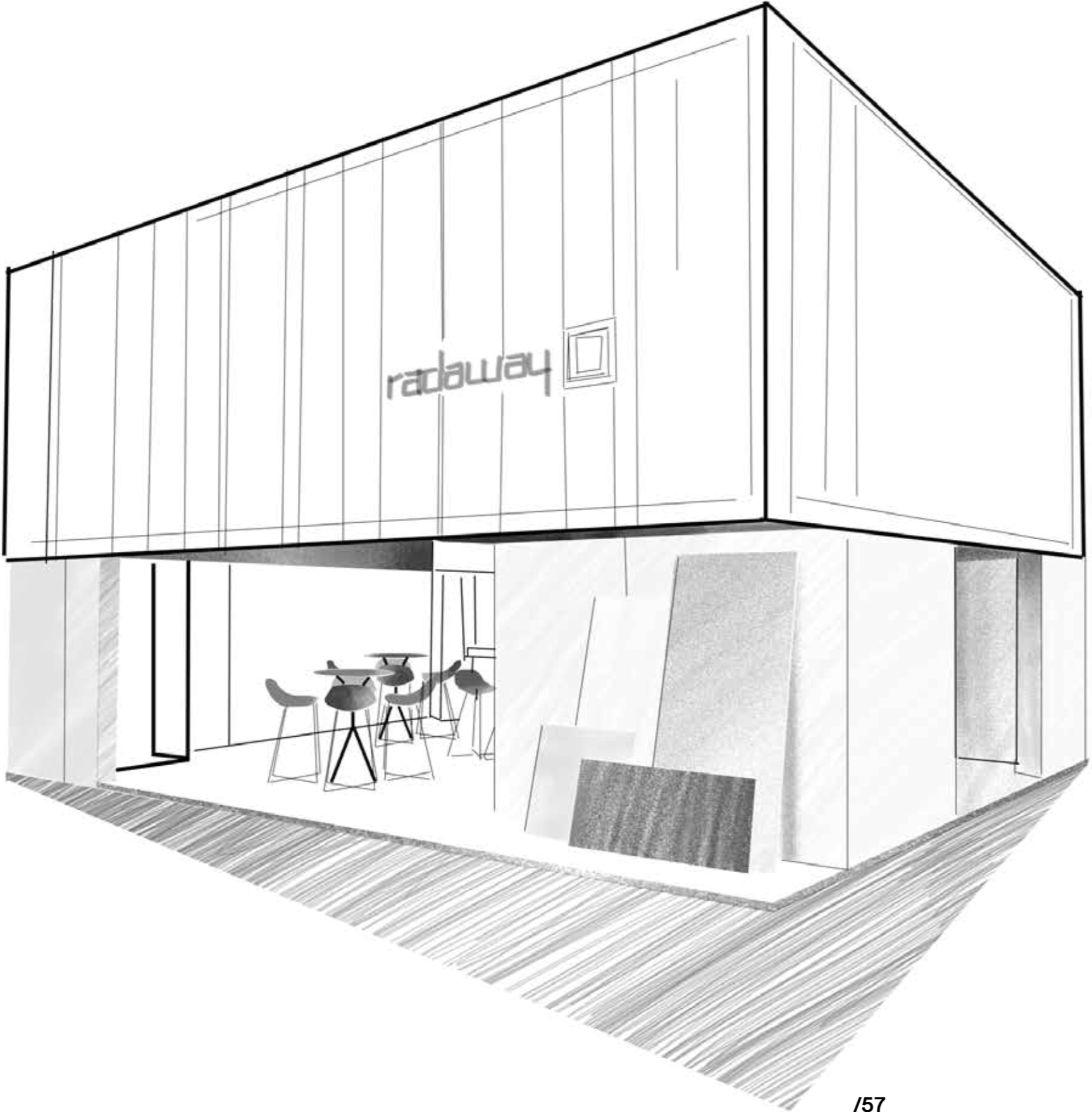
The project fits perfectly into the trends of sustainable development and craftsmanship, all combined with modern technology.

RADAWAY
4 DESIGN DAYS, 60 SQM
KATOWICE, 2020

DESIGN AND CONSTRUCTION:
SMART DESIGN EXPO



Smart inspiration



silver and copper



We proposed a new stand design to Radaway because they wanted to show new products during the 4design days fair. So it was the perfect moment.

**OMNIRES
WARSAW HOME, 130 SQM
WARSAW, 2019**

DESIGN AND CONSTRUCTION:
SMART DESIGN EXPO

BONUS: GOLDEN AWARD A'DESIGN
AWARD FOR INTERIOR



AWARD

A' DESIGN AWARD FOR INTERIOR
SPACE AND EXHIBITION DESIGN 2019

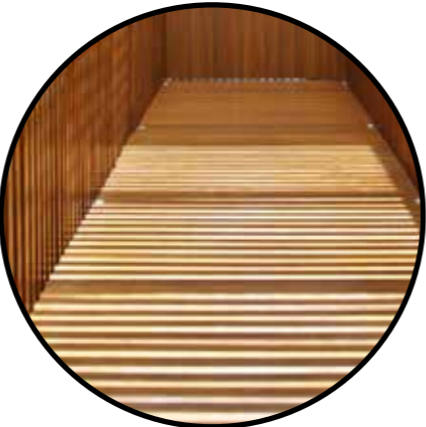


Smart inspirtion



music

+



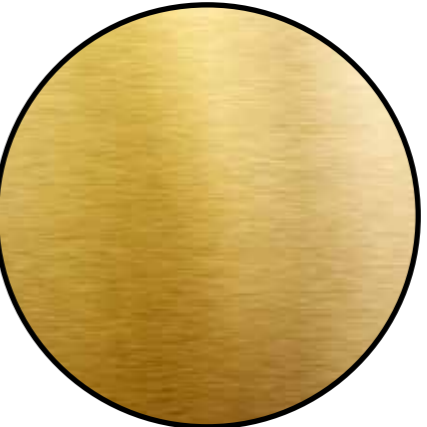
playing with light

+

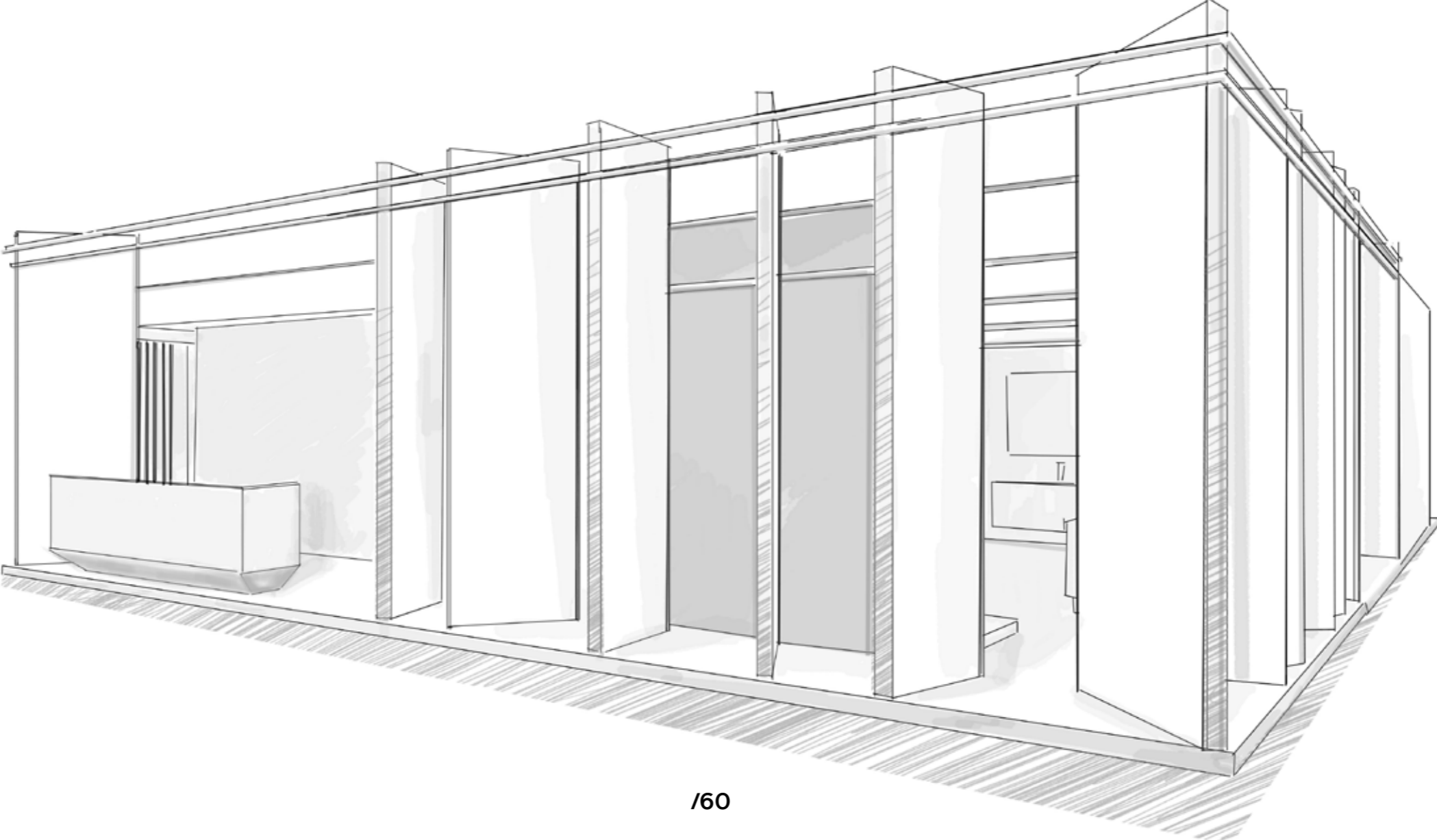


marble

+



brass





We have created a modern stand, whose external facade allowed to isolate from the communication of the fair hall, while inviting to enter the stand.

AWARD

EXHIBIT DESIGN AWARD
SILVER AWARD IN THE
CATEGORY FLOOR STAND
ON ISH 2019 FAIR

MARMITE

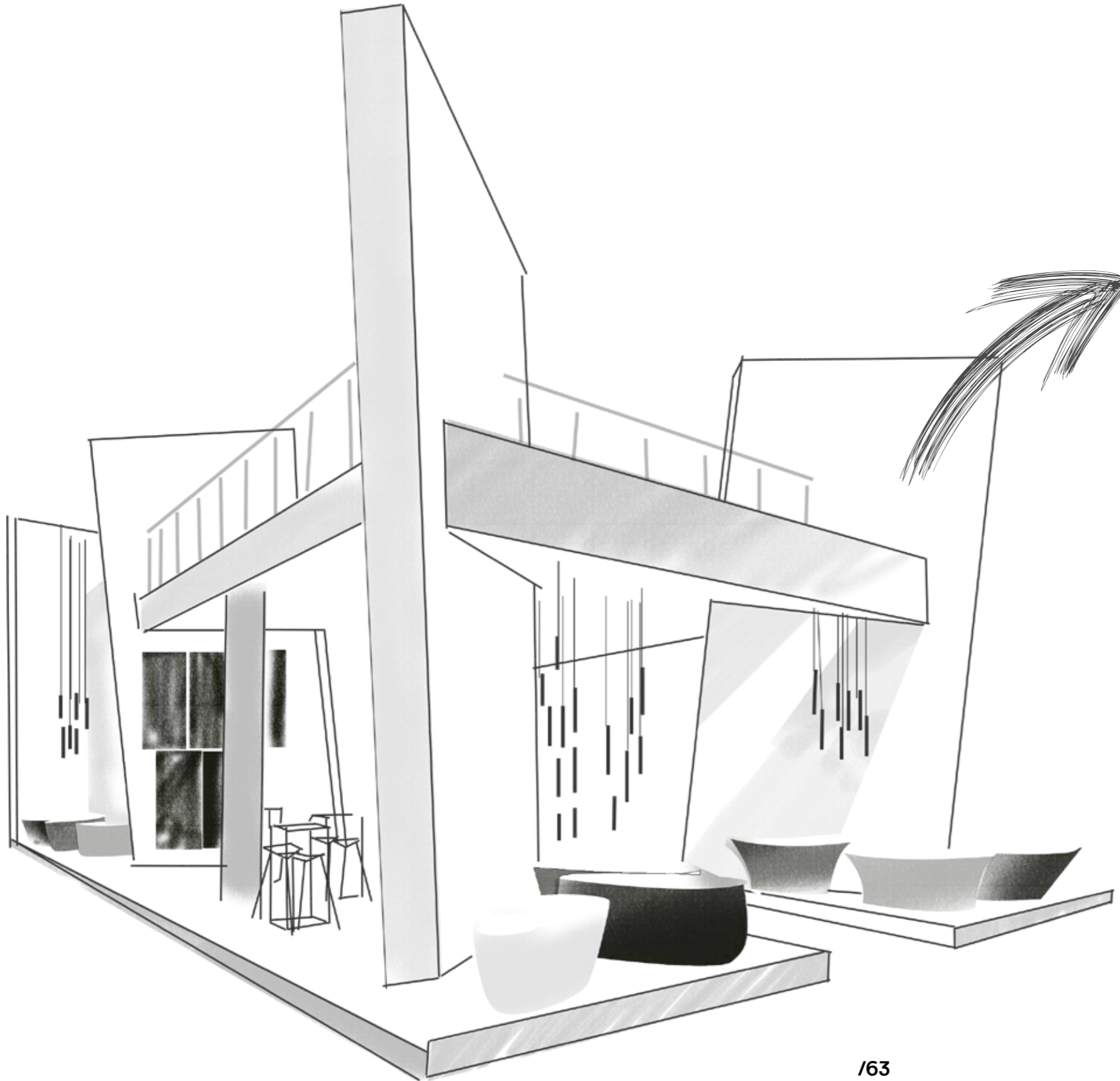
The beauty of precision.

MARMITE
ISH, 190 SQM
FRANKFURT, 2019

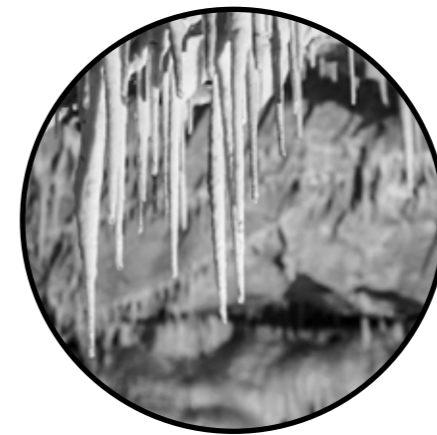
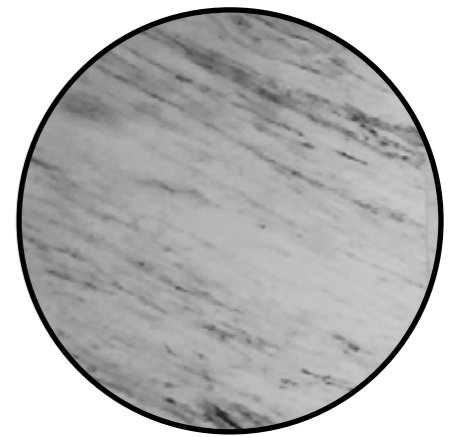
DESIGN AND CONSTRUCTION:
SMART DESIGN EXPO

BONUS: SILVER AWARD
MAGAZINE'S 34TH ANNUAL

Smart inspiration



rocks



dolomite mine





The design was complemented by stylish arrangements referring to stalactites - narrow hanging lamps and dolomite stones.

**ALUPROF
BAU, 72 SQM
MUNICH, 2019**

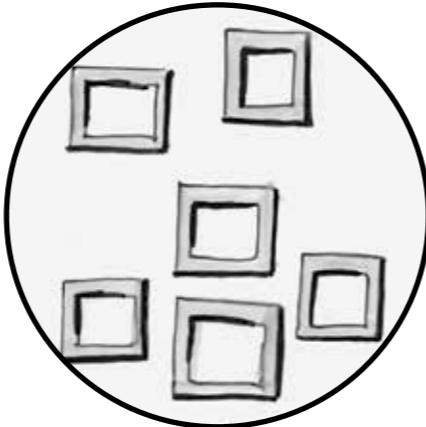
DESIGN AND CONSTRUCTION:
SMART DESIGN EXPO



Smart inspiration



client's product window



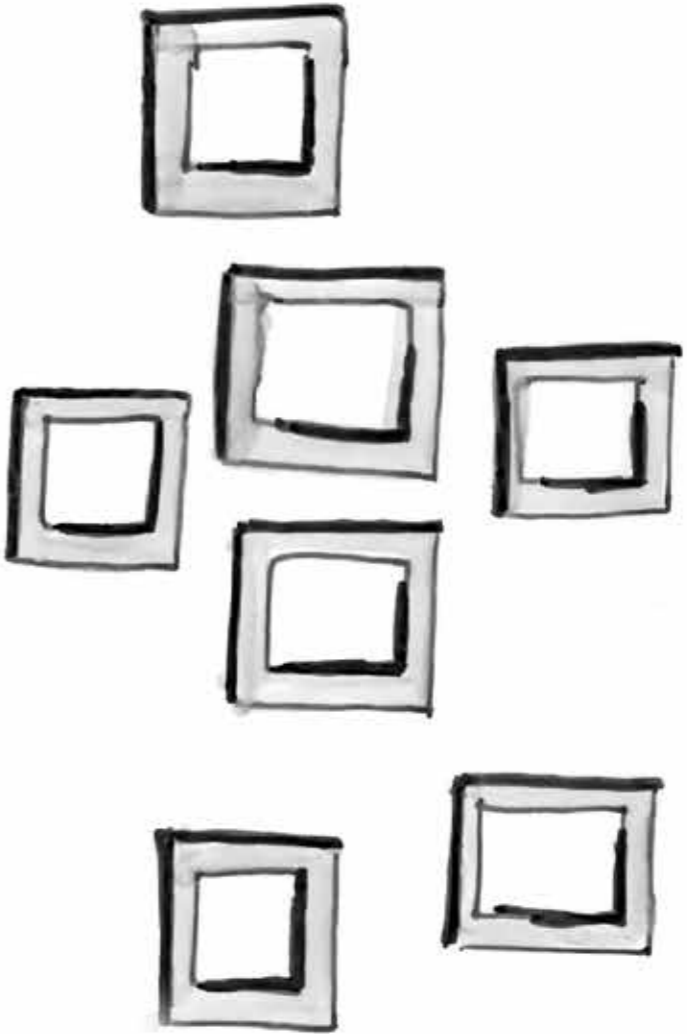
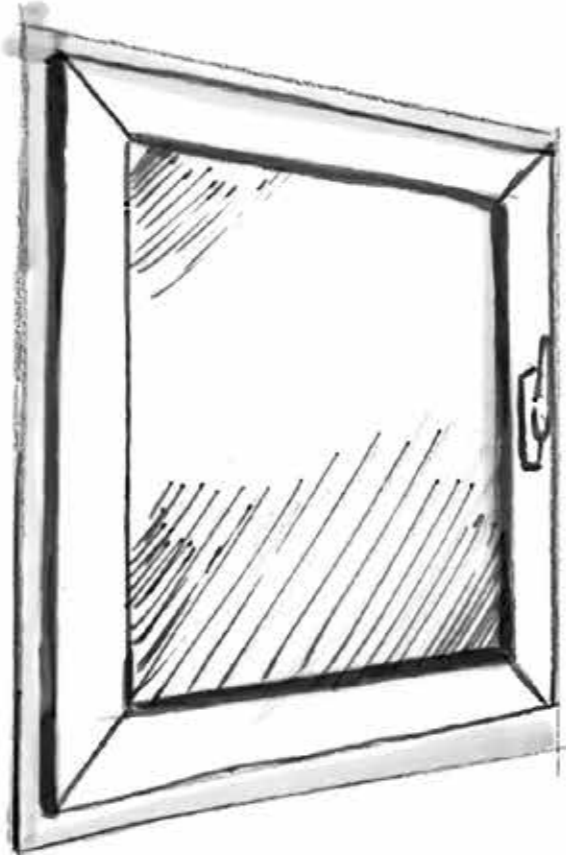
180 windows



for suspended decoration with mini windows



implementation of the installation





The most distinctive element of the stand was a hanging installation consisting of 180 windows, referring to the client's products.

**ATLAS
BAU, 159 SQM
MUNICH, 2019**

DESIGN AND CONSTRUCTION:
SMART DESIGN EXPO



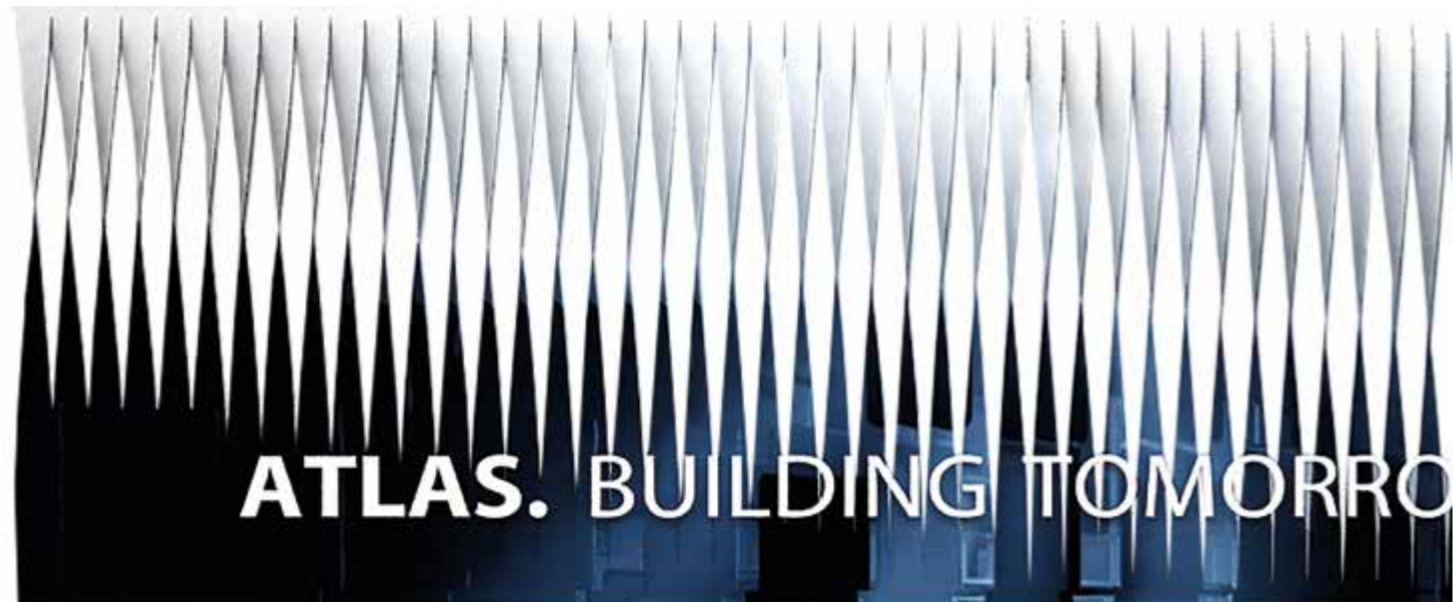
Smart inspiration



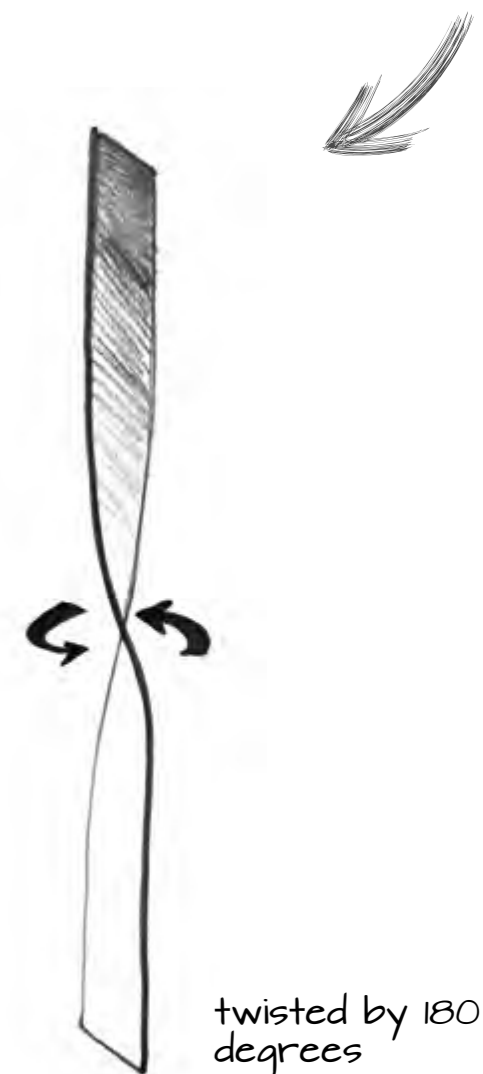
customer's graphics



divided into vertical elements



creates a unique effect of movement on the suspension



twisted by 180 degrees



To make the frieze even more impressive, we used the client's graphics, divided it into vertical parts and rotated it 180 degrees to create a unique movement effect.

**DEKOMA
HEIMTEXTIL, 94 SQM
FRANKFURT, 2019**

DESIGN AND CONSTRUCTION:
SMART DESIGN EXPO

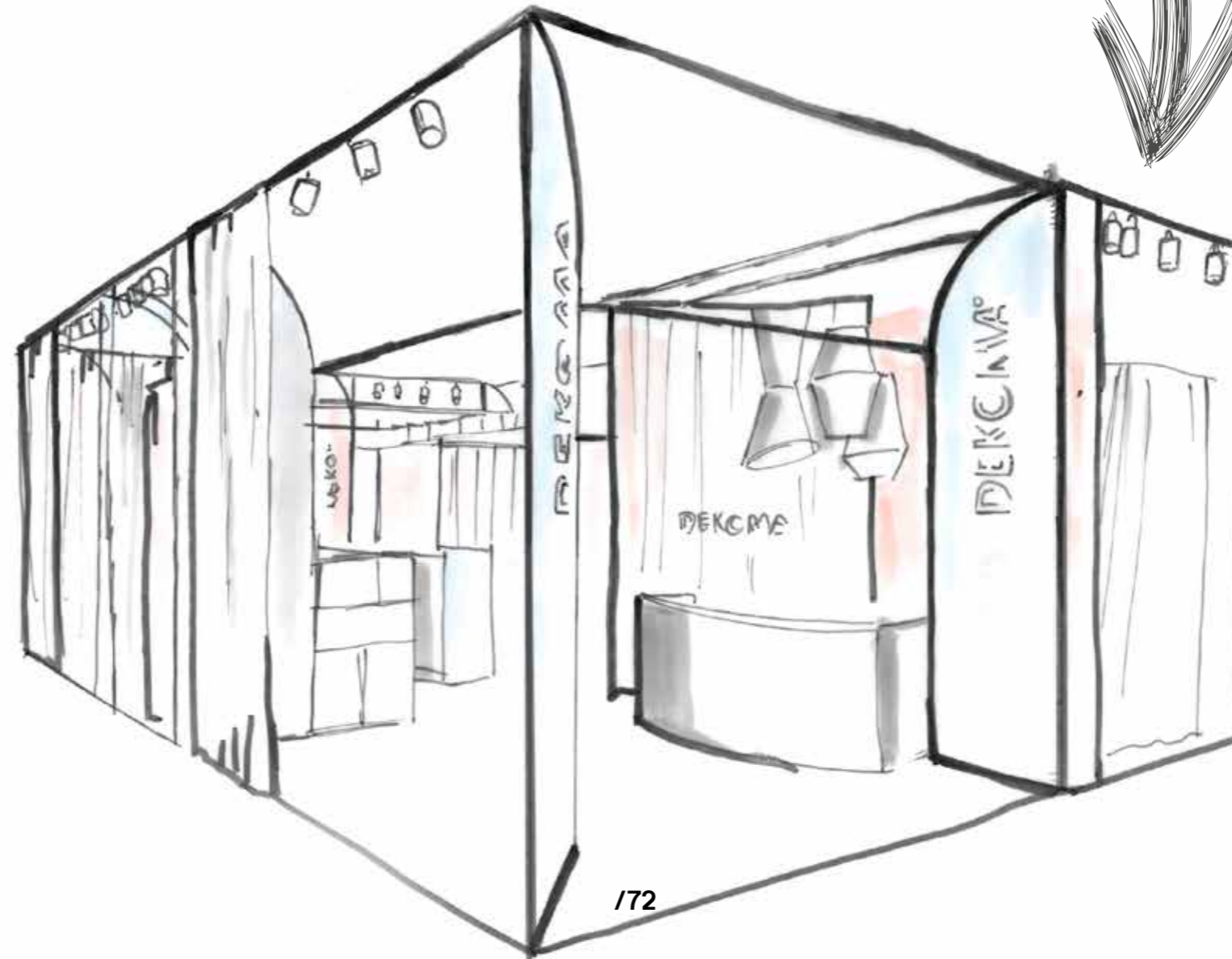
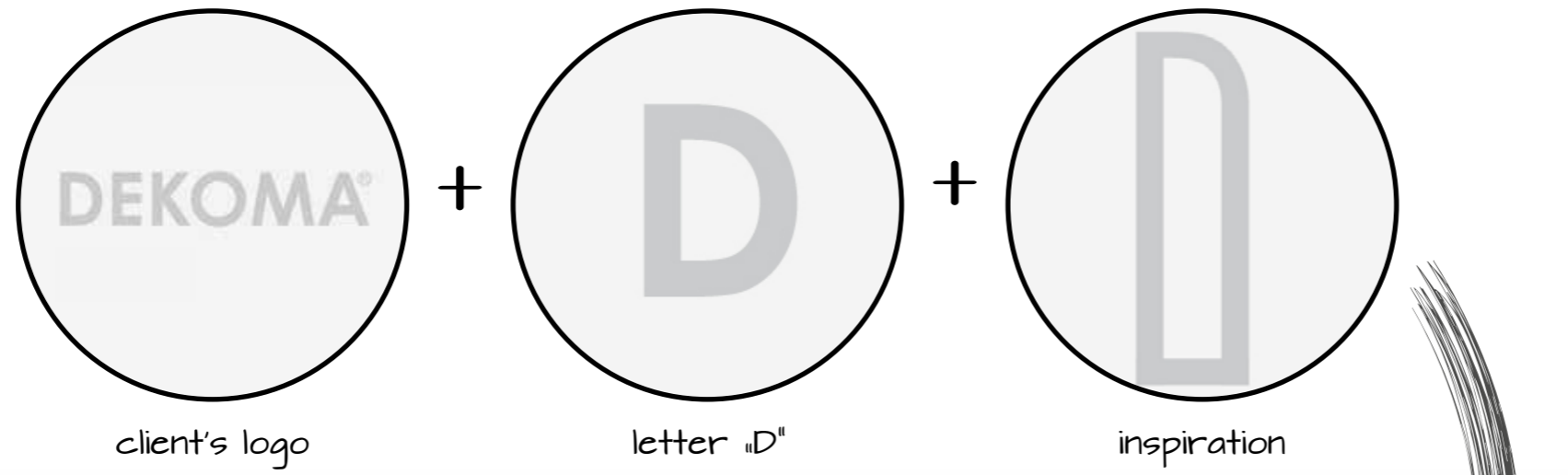
BONUS: STAND FEATURED IN TRADE FAIR
DESIGN ANNUAL 2019/2020



PUBLICATION

PUBLICATION IN TRADE FAIR
DESIGN ANNUAL 2019/20

Smart inspiration





The design of the stand referred to the latest color, textile and geometric trends.

**BALMA
WARSAW HOME, 180 SQM
WARSAW, 2019**

DESIGN: PIOTR KUCHCIŃSKI
CONSTRUCTION: SMART DESIGN EXPO

balma x NOTI





The inspiration for the stand was taken from the shapes of furniture manufacturers and the art of the 20th century.

AWARD

EXHIBIT DESIGN AWARD
SILVER AWARD IN THE CATEGORY
FLOOR STAND ON FRONTALE 2018 FAIR

DRUTEX
FRONTALE, 120 SQM
NUREMBERG, 2018

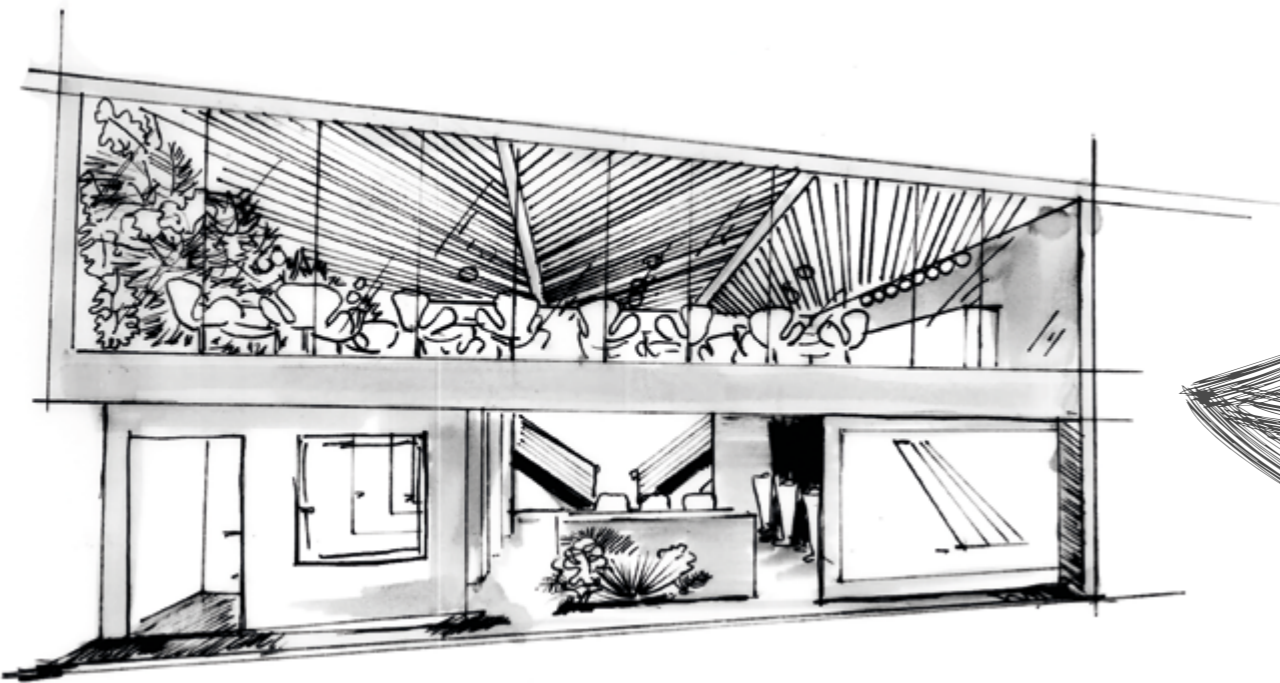
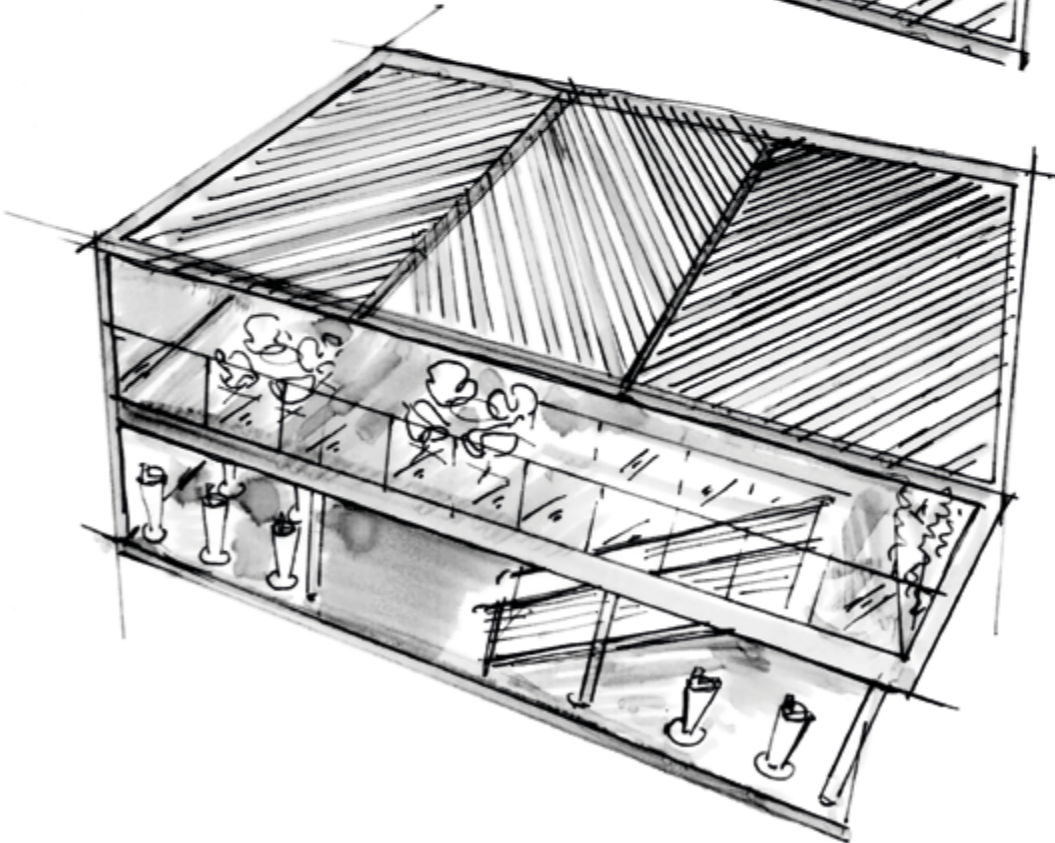
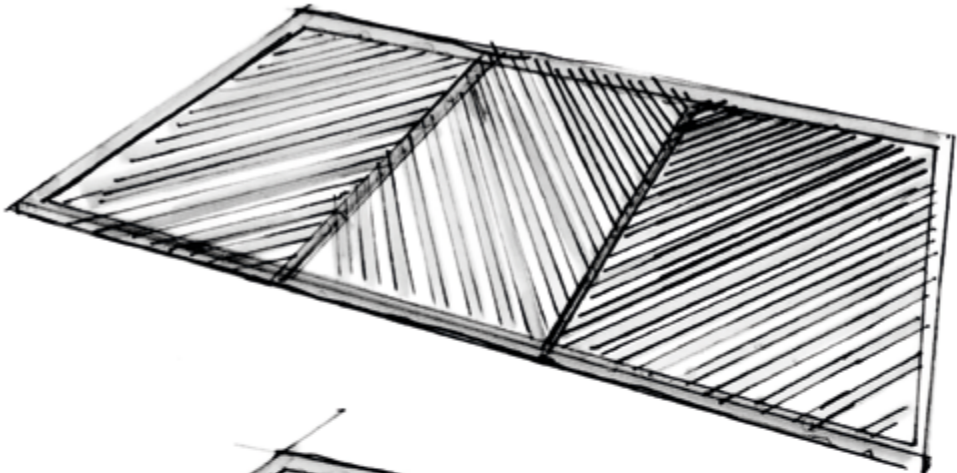
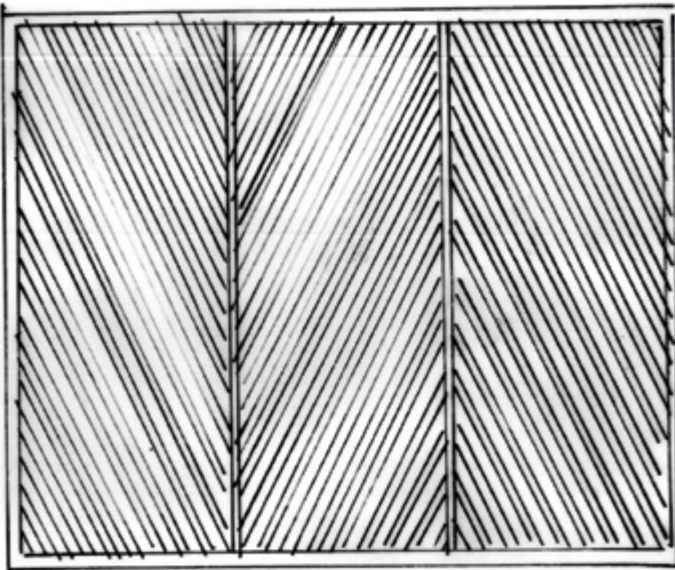
DESIGN AND CONSTRUCTION:
SMART DESIGN EXPO

BONUS: SILVER AWARD
EXHIBITOR MAGAZINE
FLOOR STAND CATEGORY

DRUTEX
ENGINEERED FOR YOU

DRUTEX
ENGINEERED FOR YOU

Smart inspiration





**650 plants in the green wall
make business talks
more pleasant.**



VOX
PSB, 104 SQM
KIELCE, 2018

DESIGN AND CONSTRUCTION:
SMART DESIGN EXPO



ZAPRASZAMY
DO SKLEPU VOX

VOX



The arrangement in the form of a cozy interior emphasizes the functionality of Vox Profiles.

IDEAL OF SWEDEN
IFA, 162 SQM
BERLIN, 2018

DESIGN AND CONSTRUCTION:
SMART DESIGN EXPO

IN COOPERATION WITH
MESS.OS EXHIBITIONS & EVENTS AGENCY



iDEAL
OF SWEDEN

IDEAL
OF SWEDEN

3.2-116

Smart inspiration



curtains as walls

+



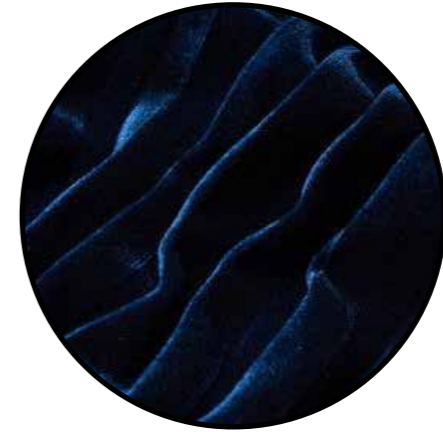
plants behind
a semi-
transparent partition

+

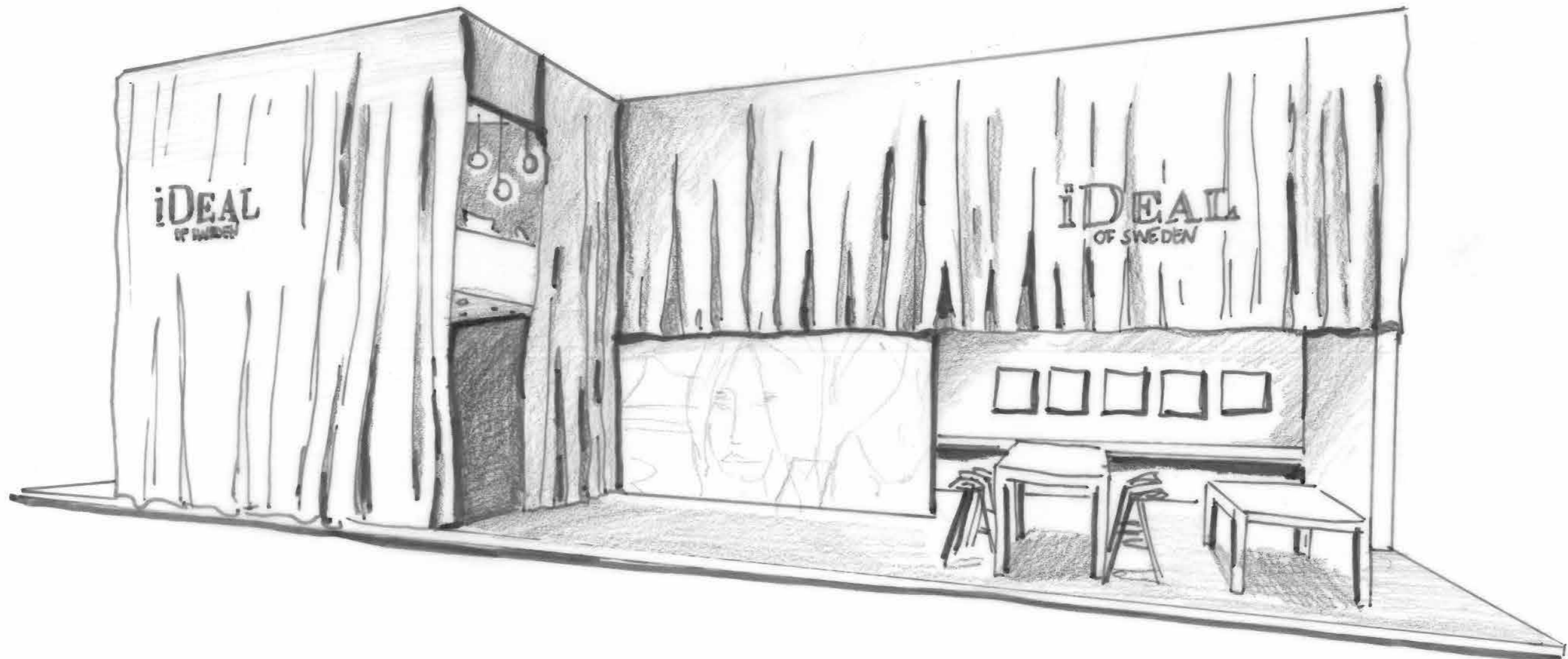


hanging decorative
lamps

+



velvet texture,
elegant dark
colors





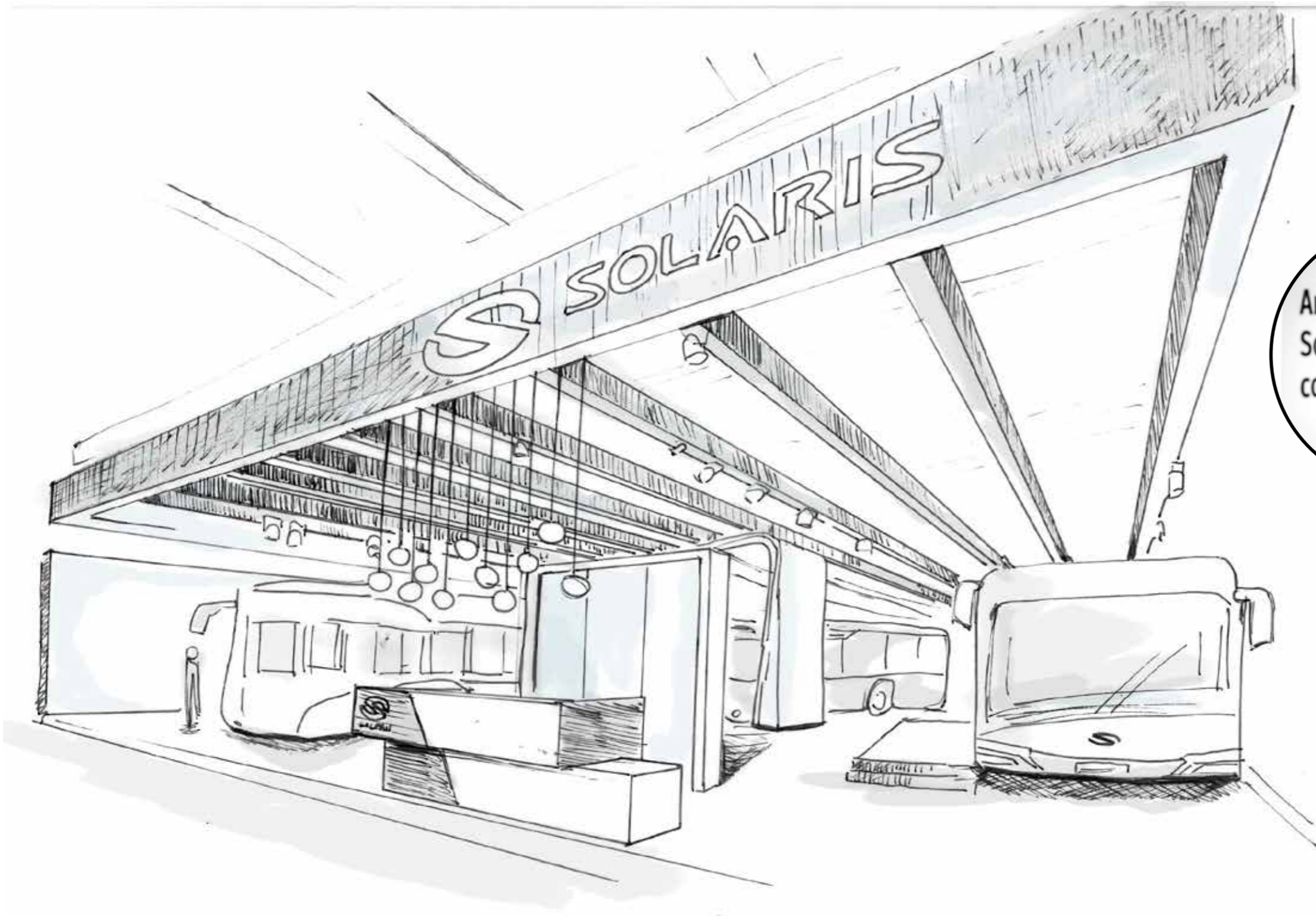
The Ideal of Sweden has set the bar very high! They wanted an exclusive stand where they would present their new one collection and products.

**SOLARIS
BUSWORLD, 672 SQM
KORTRIJK, 2017**

DESIGN AND CONSTRUCTION:
SMART DESIGN EXPO



Smart inspiration



+

leitmotif - art





Art was the leitmotif of the stand at Busworld. Art compositions have been an integral part of Solaris' vision for many years.

OKA
ORGATEC, 405 SQM
COLOGNE, 2017

PROJECT: MOA S.C.
PRODUCTION AND CONSTRUCTION:
SMART DESIGN EXPO





The phenomenal gate invites you to discover the world of OKA.

**PKP
TRAKO, 352 SQM
GDAŃSK, 2017**

DESIGN AND CONSTRUCTION:
SMART DESIGN EXPO

BONUS: STAND FEATURED IN TRADE FAIR
DESIGN ANNUAL 2018/2019



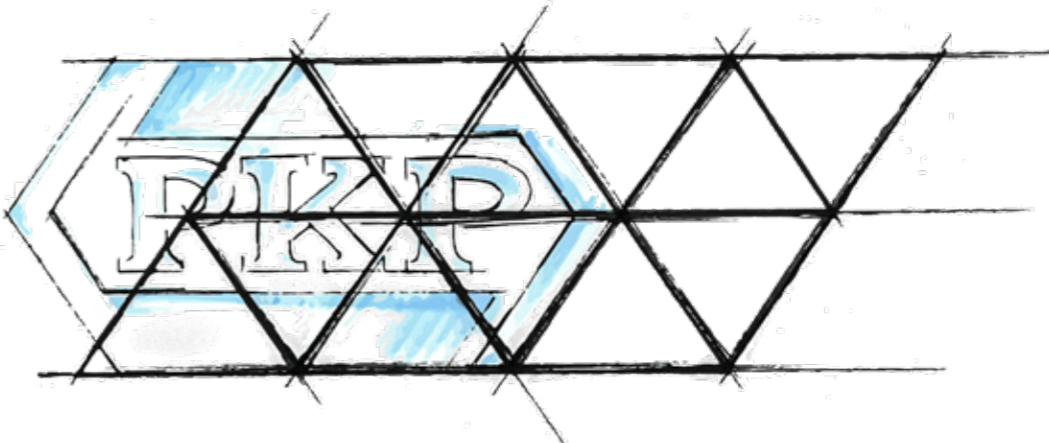
PUBLICATION

PUBLICATION IN TRADE FAIR
DESIGN ANNUAL 2018/19

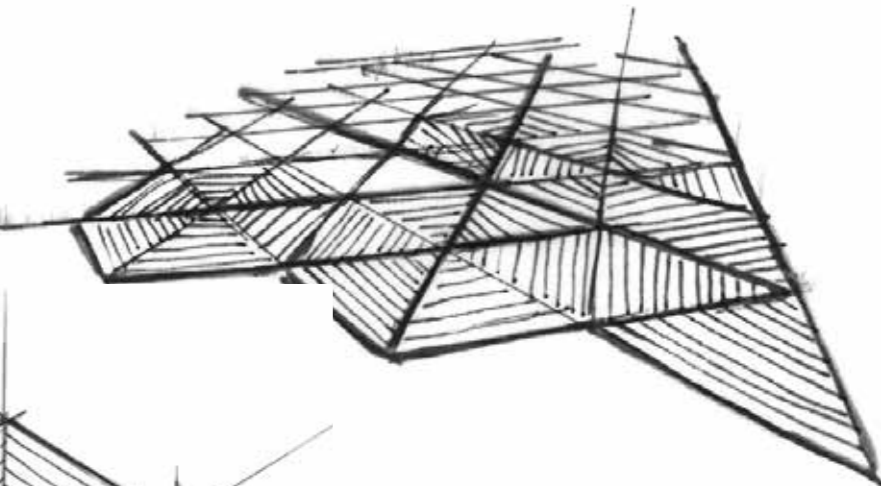
Smart inspiration



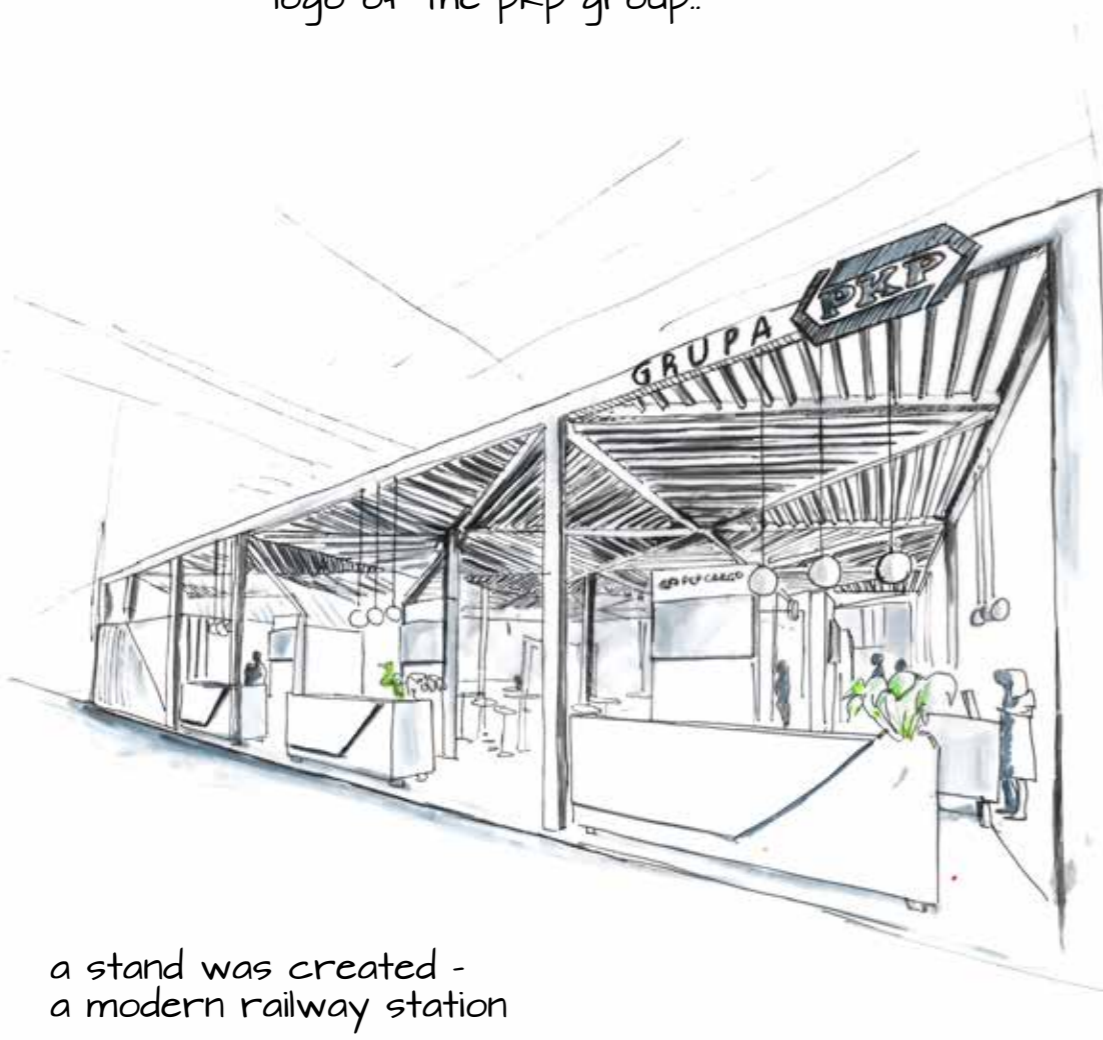
logo of the pkp group..



...creates triangles

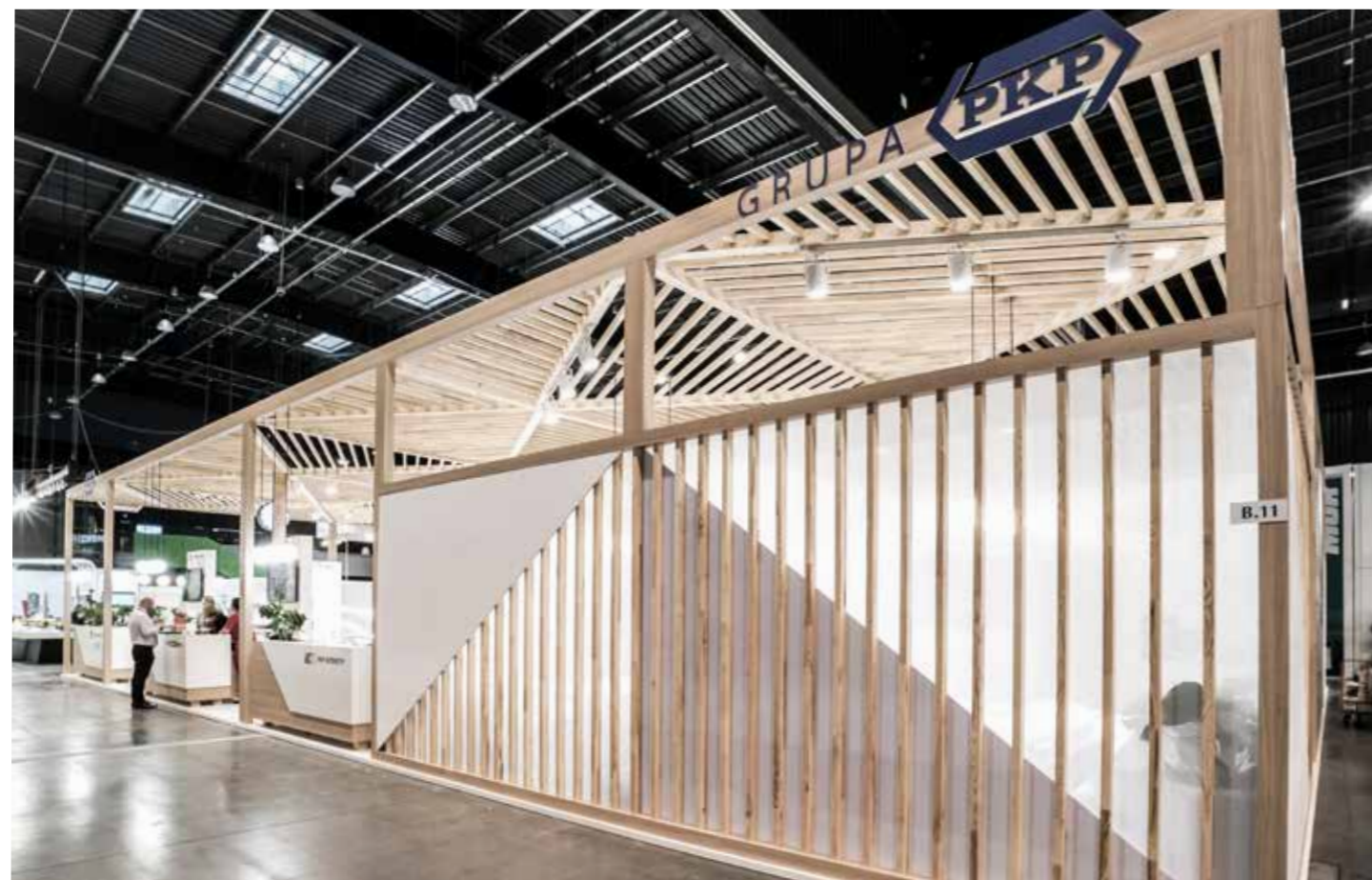


we multiplied the triangle



a stand was created -
a modern railway station

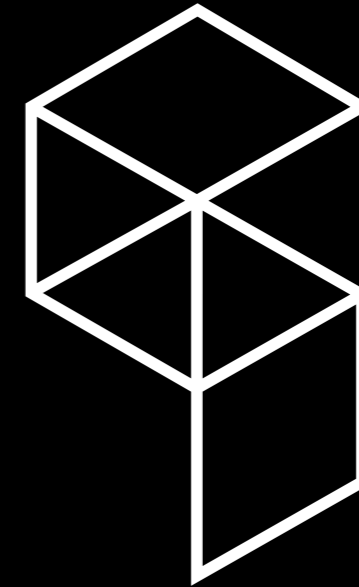




„The pleasant smell of wood accompanied us throughout the fair.”

PKP SA.

Tell us more about your needs:

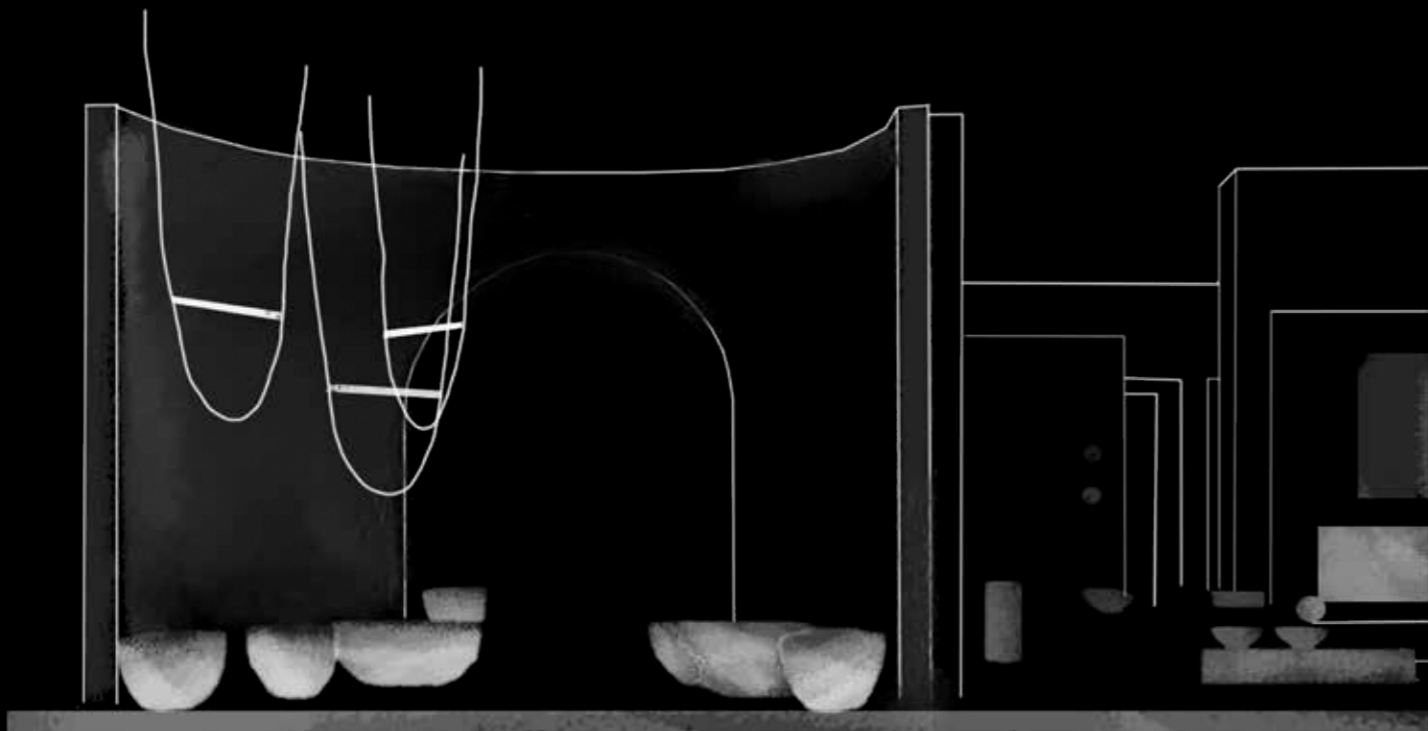


SMART DESIGN EXPO SP. Z O O.

ul. Szparagowa 12, Wysogotowo
62-081 Przeźmierowo

E-mail: office@smartdesign-expo.com

Phone: +48 61 642 71 47



f **Bē**  **in**